

TOP

EDITION THIRTEEN

www.rsma.co.uk

MARKS



A GUIDE TO THE ROAD MARKING INDUSTRY IN THE UK

CONTENTS

- Welcome Page 3
- UK's declining Road Markings Pages 4 & 5
- A bit of inspiration Pages 7 & 8
- Safety, a core business value? Pages 11
- IHE & RSMA launch joint campaign Page 12
- One stop shop for training & development Pages 15 & 16
- Complete Guide to companies in The Road Marking Sector Pages 17-23

Published by
**The Road Safety
Markings Association**

Providing Road Marking Services to the UK since 1952 Wilson & Scott continues to offer solutions for our clients from small scale developments, car parks and even school playgrounds up to major motorway and airfield schemes.

In April 2011 Wilson & Scott marked the route of the London marathon for the 27th consecutive time and are already engaged on preparation work for 2012 London Olympics.

With a nationwide presence served by depots in the North and South of England and Scotland, the company offers a range of marketing products to suit every surface type and operational performance requirement. the range includes coloured surfacing options and anti-skid material for roads, bridges, link-spans and ramps.



Line Marking



Anti-Skid Surfacing



Agglomerate Road Markings



tel: 01753 671 600
website: www.wilsonandscott.co.uk

fax: 01753 671 611
email: sales@wilsonandscott.co.uk

RS Clare & Co Ltd

QUALITY. CONSISTENTLY

Road Markings

Highest quality, to meet all national / international standards

Anti-Skid Surfacing

Full BBA accredited Type 1 high friction range

Consistent High Quality

Utilising only the best available raw materials

To see how our quality commitment can make the difference to your operations, contact our sales team.

As the UK's longest established lubricants manufacturer,
RS Clare & Co was delighted to win
The Queens Award for International Trade 2011



Stanthorpe Street, Liverpool, L8 5RQ UNITED KINGDOM
t: 0151 709 2902
email: sales@rsclare.co.uk
f: 0151 709 0518
website: www.rsclare.com

CLARE
ADVANCED SURFACE COATINGS

WELCOME TO TOP MARKS 13

Welcome to the thirteenth edition of Top Marks, the annual publication of the Road Safety Markings Association (RSMA), the trade body for the road marking industry and the largest specialist highways trade body in the UK. In this edition we take a close look at a diverse range of issues that reflect the wide variety of activities, views and services that involve the road marking sector and building successful businesses during times of economic pressure.



ARE THERE KEY AREAS WHERE ALL BUSINESSES COULD IMPROVE TO MAKE THE DIFFERENCE IN DIFFICULT TIMES?

Professor David Rae Professor of Business & Enterprise and Director for Enterprise & Innovation at the University of Lincoln, who has worked closely with RSMA and a range of highways companies throughout 2011 on the Highways Business Inspiration Programme, outlines what he sees as the 'six rules for business' in meeting the challenges of these difficult times. See Prof Rae's article on pages 7 & 8

WHAT ARE RSMA UP TO IN LOBBYING PARLIAMENT?

While all we seem to hear in the news is cut, cut, cut, the RSMA have been working hard to try and protect our sector from the worst excesses of the Government spending axe. As part of our campaign we have been measuring the quality of Britain's road marking network, writing to and meeting with MPs and being lobbying hard for an inquiry into the apparent low quality of road markings and the lack of monitoring by clients at all levels. Read more on the campaign on pages 4 & 5

WHY DO SOME BEHAVE IN A SAFE MANNER WHILST OTHERS DON'T?

Following the success of the third RSMA Safety Forum Conference, Glenn Ridsdale of Gauged Solutions looks at why some behave safely and how a safe approach to work can boost the bottom line. Find out more on page 11

WHERE DO YOU GO FOR A ONE STOP SOLUTION TO TRAINING & DEVELOPMENT?

Whilst supporting its' members to get a fully trained workforce, RSMA has developed expertise in sourcing and delivering all types of training and development from NVQs to University courses. Read how this has led to the development of the National Highways Academy and a one stop shop for all your company's training and development needs. Be signposted to better training and development solutions on pages 15 & 16

ENGINEERS AND WHITE LINERS IN JOINT CALL FOR IMPROVED SAFETY

IHE and RSMA issue a joint call for government to support experts call for better highway infrastructure to save lives on UK roads. Details of first joint road safety call from leading client and contractor organisations on page 12

PROVIDING SUPPORT ACROSS THE ROAD MARKING SECTOR TO BUSINESSES SMALL AND LARGE

In nearly 35 years of representing the road-marking sector RSMA has always tried to respond to the need of all of its members both small and large.

In recent years the Association has grown significantly, with membership expanding by over 40% in the last six years and by over an eighth in the last 12 months alone to a record of 93 member companies. The Association seeks to support and represent members through a variety of

services and activities pertinent to all members. Our service base includes:

- Sole delivery body for the road marking apprenticeship
- NVQ Assessment and related activities
- A comprehensive range of training services covering everything from management training to ADR, First Aid and more industry specific courses; all sourced at discounted rates through the Association's unique Training Brokerage
- A full range of insurance services designed to help members reduce the impact of the premium rises that have hit the construction sector hard over the last few years
- Quality Assurance Certification and Consultancy Services
- Environmental Consultancy
- Discounted Industrial & Safety Clothing
- Health & Safety Consultancy delivered directly into member companies
- IOSH and RTITB accredited training Centre
- Provision of safety equipment
- A range of specialist industry publications including: RSMA Update Your Roadmarkings, RSMA Safety Code of Practice and StanSpec the standard specification for road marking clients
- Industry Conferences and Seminars

Whilst every effort has been made to ensure the accuracy of the contents of Top Marks, the RSMA cannot accept any liability for any inaccuracies or omissions, howsoever caused.

Editor: George Lee

Looking for information on the road marking sector, guidance and advice? Looking for services that support staff development, help contractual compliance and save you money, then log onto www.rsma.co.uk



THE UK'S DECLINING ROAD MARKINGS: RSMA PUSHES FOR GOVERNMENT ENQUIRY

Nearly a third of the length of Britain's single carriageway A roads have white lines so worn out that they do not meet recognised standards – this was the conclusion of the LifeLines Report, an assessment of more than 1,500 miles of the network, carried out by the RSMA and launched earlier this year. This more detailed survey comes after findings that show clearly that eight out of ten of Britain's most dangerous roads have the most worn-out centre-line markings of all.



Two-thirds of all UK road deaths and serious injuries are on rural A-roads. Yet, of more than 60 single-carriageway A-roads surveyed, totalling more than 1,000 miles, on average 14 per cent of road markings are completely worn out; and a further 15 per cent fall into the "amber" zone and should be scheduled for immediate replacement. Just 29 per cent of lines reach the acceptable level of visibility.

The quality of markings on major A-roads is in line with those on motorways. Of the 470 miles of A roads and motorways surveyed, one in five falls below the minimum specifiable standard and should be scheduled for replacement while eight per cent have centre line markings so worn that they are barely visible. Just over a third of markings on dual carriageways and motorways make the recommended rating used by our industry but there has been a significant drop in the quality since 2008, when 69 per cent of markings on duals reached this grade and 49 per cent on motorways.

These motorways and strategic A-roads are managed by the Highways Agency, which has clearly specified standards for the quality of road markings. Two years ago, just two per cent of our major road network had markings that rated virtually non-existent. This figure has risen at an alarming rate, and now, nearly a tenth of

the centre lines on our trade routes are dangerously worn.

Most of the single-carriageway A-roads in the survey are managed solely by local authorities. The RSMA is concerned that Highways Agency ratings for road markings have never been formally adopted by local authorities, leading to inconsistent maintenance standards on UK roads and the potential for the significant maintenance shortfalls identified in the RSMA report. The high risk of head-on collisions on single-carriageways means centre-line markings are critically important to guide road-users safely on these roads.

Money's NOT too tight...

The contemporary emphasis across the whole road safety sector is on simple measures saving lives.

The Road Safety Foundation produces a highly respected annual analysis of the weaknesses of the UK's road network. Its latest report highlighted the sobering thought that more than 300 people in the UK are alive today or have avoided the prospect of a lifetime of special care



because just 15 roads have had simple improvements put in place. On these 15 roads alone, fatal and serious crashes dropped 62 per cent from 494 to 190. What were the improvements to these roads? Flyovers? Bypassing villages? No, nothing so elaborate or costly.

The most improved road - a stretch of the A4128 in Buckinghamshire – has been made safer by the innovative use of solar-powered road studs to improve night-time visibility following several fatal collisions in one specific section. It has moved from one of Britain's highest risk roads to one of the safest. Over the last two surveys, fatal and serious collisions on this road have dropped by 89 per cent, from 19 to two.

What's more, enhanced road markings feature as a contributing factor in eight of the 15 most improved roads highlighted in the Road Safety Foundation report – and it is measures such as improved centre lines that are paying back the costs of investment in an average of 10 weeks.

It is the Government's role to provide well-researched and informed guidance for local highways authorities when it comes to specifying safety measures. It is clear that this year's LifeLines Report presents evidence of sufficient public concern to merit an inquiry by Parliament's Transport Select Committee, and that's something we are seeking on behalf of the industry and of road users.

We issued a formal call for a Select Committee inquiry into the declining maintenance of road markings, as well as the lack of enforcement and in the case of local authorities, the absence of any acknowledged standards. The Committee has not been able to slot the inquiry into the coming parliamentary year so the RSMA will continue to lobby for its inclusion in the following year.



Copies of the LifeLines Report have been sent to MPs, Transport Select Committee members, Government, Government agents, policy and highways, transport and road safety sectors – along with briefing notes. We have met with the chair of the Select Committee, Louise Ellman MP and the Roads Minister, Mike Penning MP and other MPs to express our concerns and push for action.

Our activities have generated a resounding message of support from the Chairman of the Police Federation of England and Wales. It also prompted several MPs to ask for personal briefings on the campaign, and the RSMA has advised two MPs with parliamentary written questions for them to table in the House of Commons asking for assurances that highways agents and their contractors will adhere to given standards.

One MP has also promised to visit Eastern Road Markings in Colchester, the RSMA member company in his constituency, and bring the local press along to highlight the need for better maintained markings.

We are continuing to raise the issue of standards – and lack of them – among other road safety organisation, including the Parliamentary Advisory Council on Transport Safety, the European Road Assessment Programme and the AA, and will be seeking further meetings with organisations representative of local authorities and highways engineers.

As a trade association and industry, the roads markings sector has the opportunity at present to position itself for maximum gain. There are two riding factors in public policy at present which work in the sector's favour. Firstly, budgets are being cut and money is short. Secondly, there continues to be growing public and professional concern about safety, and in particular road safety. Combine these two factors and it is evident that the solution is the provision of low-cost, effective road safety measures. What does independent research show time and time again to be one of the most low cost and effective ways of making the UK roads safer? - simple road markings.

The RSMA is in a good place at present. It has a good and strong message to deliver and the more it repeats it the more both

the general public and those in a position to change funding and policy decisions hear it, the more they will appreciate the need to invest in and maintain good-quality road markings throughout the UK.



HENRY KEMP
(Road Maintenance) Limited
Britain's Leading Road Stud Specialist
With over 30 years Experience

At the
Cutting Edge of Road Stud Installation
For Further Information
Tel: 01777 703643
Fax: 01777 860589
Email: roadstuds@henrykemp.co.uk

VISIMAX[®]

BECAUSE IT'S BRIGHTER!



www.potterseurope.com

Potters Ballotini Ltd
Pontefract Road
Barnsley
South Yorkshire
S71 1HJ

Tel: +44 (0)1226 704 500

Fax: +44 (0)1226 207 615

potters-uk@pottersgroup.com

Onesolution.....call meon

Distributing a wide range of surface marking products, equipment and consumables to the road marking industry.

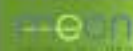
- Road studs
- Paint
- Cold plastics
- Machines
- Preformed
- PPE and clothing
- Resin systems
- Accessories

AND MUCH MUCH MORE

Email mail@meonmarketing.com or call us
now on 0800 118 1922 for your **FREE** directory



Surface Marking



Civil Engineering



Deicing



meon UK & IRELAND

e. mail@meonmarketing.com

call **FREE** on: 0800 118 1922

www.meonmarketing.com

TIMES ARE TOUGH AND WE ALL NEED A BIT OF INSPIRATION

As you would expect from the highway sector's leading trade body, RSMA have taken the initiative in developing new methods of supporting the sector. One of these initiatives has been working with the University of Lincoln Business School to develop the Highways Business Inspiration Programme (HBIP). The 4 day strategic management programme for senior managers, which with the financial support of CSkills is currently available to any highways sector business free of charge, has built upon the successful University of Lincoln Business Inspiration Project and adapted it to focus on the pressures pertinent to businesses working in the highways sector.

In this article Professor David Rae, of the Business School and academic lead on HBIP provides an outline of his six rules of surviving the current downturn and issues an invitation to businesses to come onto the course and be inspired!



RAE'S 6 RULES OF BUSINESS: HOW TO SURVIVE AND SUCCEED IN A DOWNTURN

Professor David Rae,

Director of Enterprise & Innovation, Lincoln Business School, University of Lincoln

It's often said that people learn business skills by experience rather than in the classroom. It may seem odd that a Professor in a Business School largely agrees with this view. Much of my own experience, in business and working with owner-managers over the past 20 years, confirms the value of real-life learning and what I call 'practical theories of business' which people develop from finding out 'what works for them'. Rarely do you get there first time, and it can mean finding out what does not quite work and failing a number of times before you get it right.

There is a short-cut to learning only from your own experience, and that is by gaining access and learning from your business peers. Our Highways Business Inspiration programme run in partnership between the National Highways Academy and Lincoln Business School is a highly practical approach which enables business owners and managers to share their experiences and insights into the problems, solutions and successful approaches they have

learned and use in their own businesses.

We have all found over the past three years or so that managing a business successfully in a recessionary economy is much more challenging than in the 'boom times'. But it's also true that those businesses who can manage effectively in a downturn will be better placed than others to prosper as the economy improves.

Here are 'Rae's 6 rules for business' which are a series of practical, learned-by-experience suggestions for managing your business effectively in today's 'flat-lining' economy. Which of them are you already using? Which could work for you?



1. CUSTOMERS

- Find and keep your own customers - you have to be able to solve their real problems & sell yourself effectively.

Too many businesses rely on 'being in the supply chain', have too few major customers and do not invest personal time and effort in developing customer relations - remember, 'people buy people'.

- Check their credit rating and monitor their speed of payment.

You have not made a sale until they've paid the bill. Some customers have bad habits over slow payment; some are big enough to know better.



2. RISKS


- Assess risks & their potential impact - e.g. customer or supplier closure
- Develop contingency plans to mitigate risks

We live in a risky business environment. Don't assume everything will be OK - look at the potential risks, pitfalls and liabilities for your business and at how you can reduce the biggest risks or anticipate how you will respond if the worst happens.



3. OPPORTUNITIES

- Be creative and opportunistic to create new value - e.g. new pricing, products & offers to stimulate demand
- It takes longer and costs more than you think to innovate or do anything new.



There are always new opportunities in a downturn – other businesses will be suffering and it may be possible to acquire plant, people and clients at good prices. Innovation and new approaches can open up promising opportunities but experience tells us that when doing anything new it usually costs more and takes longer to implement than you first expect, so be prepared to double your investment of time and money for those new ideas. That means doing your research to find out just how attractive an opportunity it is in the first place.



4. MONEY IN – MANAGE CASH AND BREAKEVEN

- Forecast and monitor your cash flow very closely
- Aim to maintain/increase profit margins rather than increasing sales turnover (bottom line not top line)
- Measure breakeven on the business, customers, products, staff.

Beware of 'buying' work at cut-throat margins. Profitable businesses fail because they run out of money, often suffering from slow payment and lack of credit. Aim to be cash-positive and you will sleep better at night. Break-even is the point at which the business, a person or a contract starts making a profit and is always an important measure. I remember a scrap merchant in the Black Country (where else?) pointing to a pile of crushed cars and saying 'when it reaches the fence we're in profit' – we all need a 'rule of thumb' like that.



5. MONEY OUT – MANAGE COSTS & DEBT

- Keep your fixed costs down: cut costs which are not essential.
- Aim to grow sales on a variable cost basis – borrow, rent or lease assets but don't buy things or hire people you don't need.
- Keep in contact with creditors & lenders to avoid nasty surprises.

Businesses can be wasteful; you don't need to be. Invest your money only in assets and projects which will provide a strong return. The worst time to ask a lender for more money is when you really need it. Up to date management accounts are essential and you must read them to monitor the health of the business.



6. PEOPLE

- Show positive, realistic leadership with open communications
- Set & monitor clear & realistic targets – sales, costs, project completion, debt etc.
- Move unproductive people & customers out of the business.

At the end of the day it's about how you manage relationships with people. You can tell a lot about a business from the quality of interactions between its managers, employees, customers and suppliers. The business culture, or 'way we do things around here', often reflects the personality of its main-man – think of Michael O'Leary, chief executive of Ryanair. What are the positive effects of your personality on the business, and what are the negative effects, or 'shadow side'? Try asking your wife or partner about this!

These are some learning points from my own experience from working with many businesses. The principles of running an effective business do not actually change as much as the business environment. Feel free to share your own insights about what works for your business with me, by email to drae@lincoln.ac.uk or by twitter @warycat

Better still, join our Business Inspiration programme for the National Highways Academy by contacting George Lee by email to info@nha-solutions.co.uk or info@rsma.co.uk or by telephoning 01427 610101.

SPECIALISTS IN PARTNERSHIP – DELIVERING ADDED VALUE

The Highways Business Inspiration Programme is a partnership project between RSMA and the University of Lincoln, which has received financial support from CSkills. The programme is one of a number of groundbreaking courses that RSMA has adapted/developed specifically for the Highways sector through our training arm National Highways Academy (NHA); other courses include those in Environmental Management, Health & Safety, and Culture Change – delivered in close partnership with highly qualified experts in these fields, allied with our extensive highways experience.

By working in partnership with specialist and academics, to make courses relevant to our sector, NHA can deliver real added value to our customers. More information is available on page 15 & 16 of this edition of Top Marks, online at www.nhasolutions.co.uk or by calling NHA on 01427 610396.

SERVICE

QUALITY

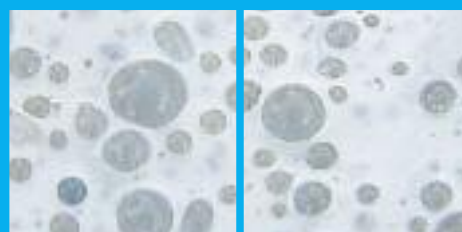
INNOVATION



Making sense of the road ahead

Weatherline®

the new generation in road marking

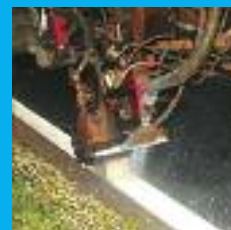


Through leading-edge technical design and processes, we are able to combine sustainable resins with exceptional materials to produce the ideal marking for your project.

Weatherline® is the first lay flat, wet night system that surpasses BSEN 1436 RW3.

Simply put, the technology is in the marking, making this one of the most versatile road marking products. This helps both contractors and clients improve road safety in the wet, whilst meeting their specification performance requirements.

- Requires standard machine application equipment
- No embossing ensures no clogging up of channels
- Easy to use
- No extended cure time required
- Quick Drying Time
- Meets specification BSEN 1436 RW3



Weatherline® Screed Extrusion	Colour	Durability BS EN 1824	Luminance BS EN 1871	Retroreflectivity BS EN 1436 Dry	Retroreflectivity BS EN 1436 Wet	Skid Resistance BS EN 1436	Softening Point BS EN 1871	Edge Lines	Centre Lines	Lane Lines	Symbols
Weatherline	White	P5	LF 6 > 0,80	R4 > 200	RW3 > 55	S2 > 50	SP2 > 80	✓	✓	✓	✓

For Exceptional Road Marking Materials, Design & Project Management, speak to:

Ambridge Thermoplastics Ltd

Brook Farm, Drayton Road, Newton Longville, Milton Keynes MK17 0BH



T + 44 (0) 1908 649 110

W www.ambridgethermoplastics.com

A Member of the WJ Linkline Group

Weatherline®

DBi PRISMO

CONTRACTING SERVICES

***Ensuring the Future by Finding Tomorrow's
Pro-Active Safety Solutions Today!***

- Road markings
- Temporary road markings
- Road studs
- Road repair
- Crack sealing solutions
- Surface safety solutions
- High friction surfacing
- Coloured and decorative surfacing
- Imprint
- Bridge deck and joint repair
- Road marking assessment
- Traffic sign management
- Removal - Scabbling, Hydroblast, Gritblast



Renny's Lane, Dragonville Industrial Estates
Belmont, Durham, DH11 2RS, UK

T: +44 (0)845 688 0155 F: +44 (0)191 370 6440

www.dbiservices.com/prismo



TRANSFERRING SAFETY INTO A CORE BUSINESS VALUE

Developing Health & Safety practices across the road marking sector has become a core activity of RSMA over the last five or six years. The Association's Health & Safety Forum, made up of RSMA staff and member volunteers is now looking to see how the Association can play a role in ensuring that safety becomes core business value of member companies. In this article Ian Mumby, RSMA Health & Safety Officer and Glenn Ridsdale of Gauged Solutions look at the latest RSMA project designed to transfer safety into a core business practice.

Over the past five years the RSMA Health & Safety Forum has been directly involved in promoting changes in the approach of the sector to all things health & safety – the Forum pressed for the Association to employ a full time health & safety professional, the Forum promoted the Safer Way training video and was integral in the development of the RSMA Best Practice Guide – including the traffic management section scheduled for distribution at the end of 2011.

One of the central projects for the Forum at this time is the investigation and development of behavioural safety programmes to help companies change their culture and approach to health and safety. Whilst this initiative is part of a larger programme that has led to the Association becoming a recognised centre for IOSH Working Safely and Managing Safely training programmes, the focus of the forums input into the project is looking at how businesses can initiate and sustain fundamental change in health & safety practice across their workforce as a whole. In many respects the project will for many companies be pushing against an opening door as many businesses are already striving for an improvement in safety performance, and are therefore looking to culture development and in many cases culture change programs to deliver that improvement. Unlike a formalised safety management system, culture change programs look to address the challenging topic relating to the behaviours of people. Behavioural change is a complex subject but when approached in a pragmatic and engaging way, it is seen by many leading businesses as a next step, to an improved safety performance.

In terms of being able to transfer safety into a true core business value, there are six key dynamics that demonstrate clear and visible commitment to safety leadership, and they are.

- Top Management Commitment
- Middle Management Involvement
- Safety Performance focused supervisors
- Active participation of the workforce
- Positive perception of safety by the workforce
- Constant review of working practices

Before considering any form of behavioural change programme it is recommended to first of all, understand the culture of your business, and where it sits with respect to the above six dynamics. To do this, an initial assessment of

the prevailing culture and climate needs to be conducted. This is achieved by adopting a scientific approach, using workplace observations, one to one interviews and focus groups. The outputs from these sessions are utilised to formulate a bespoke safety climate questionnaire. Once formulated, the safety climate questionnaire is distributed to all employees for completion and then analysis. On completion of the climate questionnaire analysis, this along with the outputs from the focus groups, work observations and one to one interviews are formulated into a management diagnostic report for the board and senior management review.

As shown in the core value dynamics above, effective safety leadership starts from the top of an organisation, with demonstrable belief from the board of directors and senior management team that safety is aligned as a top priority within their core business values. With this in mind the diagnostic report from the research is delivered to a board level interactive workshop, where ideas and suggestions are used to train various levels of leaders within an organisation on the subject of behavioural leadership and safety leadership techniques.

Culture change is developed through visible leadership and workforce coaching and support. Understanding how to engage with people with effective transactions, being prepared to make positive safety interventions and rewarding safe behaviour and practices, form the basis of the training, which is rolled out from the outputs of the leadership workshop, and also the onsite practical implementation of the program.

In association with the RSMA and NHA, Gauged Solutions partnering with Awaken Consulting & Training Services offer bespoke consultancy and training services in relation to cultural change programs. We are pleased to announce, the launch of our fully accredited Neuro Linguistic Programming Diploma in Behavioural Safety and Safety Coaching. This is considered the UK's first qualification of its kind, with regard to the accreditations it offers, and has been fully developed to offer a formal qualification in culture change techniques and is available in partnership with RSMA and the National Highways Academy.

NLP can be used in a number of different ways from coaching others to support a change in attitude and behaviour in others, to supporting leadership initiatives and changes in culture, through to a series of tools that

assist in understanding, motivating and influencing others. NLP is best applied when an organisation has implemented and integrated standard Health and Safety practices and the maturity of the safety culture is sufficient enough to not only conduct but actually expect positive and negative behavioural interventions,

Some of the key learning outcomes covered in the Diploma in Behavioural Safety coaching include:

- Understanding when to introduce a behavioural based program
- The role of leaders and managers
- Errors and violations analysis
- Behaviour and its link with positive and negative consequences
- Identifying the phases of communication and being able to effectively communicate in one to one and group situations from a coaching mindset to facilitate behavioural change.
- Use effective listening skills and linking these to effective questioning techniques to gain information and understanding.
- Utilise outcome focussed coaching and communication to facilitate a positive attitude towards health and safety.
- Develop skills in effective communication, coaching and leadership through rapport and relationship building.
- Develop skills in giving and receiving feedback.
- Gain an understanding of how other people think and how to structure information that enables them to develop greater ownership for health and safety.
- Ability to effectively present information in a variety of formats, including formal reports and referencing.
- Effective leadership skills in organising, running and managing informal and formal meetings.
- Effective leadership, coaching and management skills in influencing individuals and in resolving conflict.
- Effectively plan, design and run presentations to a range of audiences.

If you are interested in either the NLP programme or general training or consultancy services regarding behavioural safety and behavioural change please contact RSMA Health & Safety Officer Ian Mumby on 01427 610101.



CLOSER CLIENT AND CONTRACTOR CO-OPERATION LIKELY AS RSMA AND IHE CAMPAIGN TOGETHER



FOR IMPROVED INFRASTRUCTURE TO SAVE LIVES

The Institute of Highways Engineers (IHE) and the Road Safety Markings Association (RSMA) have co-operated on a number of small projects over the years, however, in issuing their first joint statement on improving road safety, the two organisations have signalled that the co-operation between the predominately client oriented IHE and the majority contractor led RSMA is likely to increase in the years ahead, as industry professionals from all sides seek to find solutions to problems caused by funding shortages.

In their joint statement The Institute of Highways Engineers (IHE) and the Road Safety Markings Association (RSMA) have called on the government, clients and industry to respond positively to the recently published consultation paper from EuroRAP and EuroNCAP, which emphasised the life saving potential of currently available vehicle technology working with improved highway infrastructure, such as better performing white lines.

In the consultation document issued jointly by the safety organisations, Roads that Cars can Read, EuroRAP and EuroNCAP assert that the condition of road signs and markings could be the greatest hurdle in reaping the benefits of new in-car safety technology.

According to the report, technologies now arriving in new car showrooms are forecast to save thousands of European lives as they trickle down into universal use. Increasingly cameras and sensors are used to read the road ahead and help the vehicle react early if drivers are heading into danger; though, obscured signs or faded road markings are hard to read whether using the naked eye or an in-car camera. The new report includes a survey of six countries to probe how signing and marking practice still varies around Europe after more than half a century of international conventions.

John Dawson, Chairman of the European Road Assessment Programme (EuroRAP) says: "Huge sums have been spent developing technology that is revolutionising the safety of our vehicles. Little attention has been given to the quality of basic signing and marking with which drivers currently have to cope. We've found no country which systematically measures the quality of signing and marking being achieved. A century after the cat's eye was invented, technology is again driving this rethink of how the road ahead can be read safely. The key lesson is that what is good for humans is good for machines."

Roads that Cars can Read recommends that the roads and motor industries should learn

to work on new designs together by focusing on helping drivers with two early technologies now offered in new cars, "Lane Support" and "Speed Alert". Lane Support reads lane markings to work out the position of the vehicle within the lane and steers drifting vehicles back on path, a common origin of crashes. "Speed Alert" allows drivers to choose warnings when exceeding posted roadside speed limits.

Michiel van Ratingen, Secretary of the European New Car Assessment Programme (Euro NCAP) says: "the roadsides of Europe are littered with flowers and shrines. More than a quarter of road deaths involve running off the road. 'Lane Support' gives the driver a warning that's as physical as hitting a rumble strip on the road. It is estimated more than 2,000 European deaths annually can be prevented with this technology."



"The consequences of missing a change of speed limit have become more serious as more nations have adopted a points system and enforce limits rigorously. The 'Speed Alert' system protects the drivers from missing a speed sign, not least when limits chop and change."

Roads that Cars can Read recommends that both the roads and motor industries this decade should target improved signing and marking on the ten per cent of Europe's roads where the majority of travel and the majority of deaths are concentrated involving higher speed crashes.

"The majority of European deaths are on national roads and busy regional roads outside towns. The single carriageways are Europe's killing fields. We should focus this decade on ensuring the quality of the signing and marking on these busy open roads whether or not the technology needs it," says John Dawson.

"We now need a full survey of the quality of road signs and markings to measure the real-world variation in signing and marking across borders and define the working tolerances that are acceptable."

Commenting on the report IHE President Steve Spender and RSMA Chairman, John Lloyd said, "The EuroRap/EuroNCAP report correctly highlights that the combination of high tech vehicle technology and low cost, low tech infrastructure improvements such as better quality road markings can, with better planning and relatively low levels of investment, save a disproportionate number of lives and reduce serious injuries on our roads. Since reducing accidents has a positive economic impact for the country as a whole both the IHE and the RSMA call on the government to respond positively to the consultation and commit to take positive action to exploit the opportunities the report highlights"

A commitment to quality, service and above all road safety...

Right down the line



From the moment you set off on the road with us...

...you'll benefit from more than 40 years of industry experience in road marking and road safety surfacing solutions.

Hitex International has evolved into a Group of companies with unrivalled and comprehensive skills, working together to provide the highest quality materials, equipment and contracting services throughout the UK and a growing customer base internationally.

Hitex have a reputation for technically advanced road marking, demarcation and high friction surfacing solutions to meet the demands of numerous highway situations and in all climatic conditions.

Passionate about road safety

The fundamental ethos of the Hitex group is the desire to improve road safety.

For us, there is a compelling moral and financial case for more commitment to road safety, that's why we strive to design our low cost engineering solutions to help you reduce accidents and save lives.

Totally integrated service

Integration between Hitex materials and equipment allows much more control in delivering quality, performance and safety.

We provide the complete package of materials, equipment and contracting services to consistently deliver innovations in road safety solutions-*right down the line*.





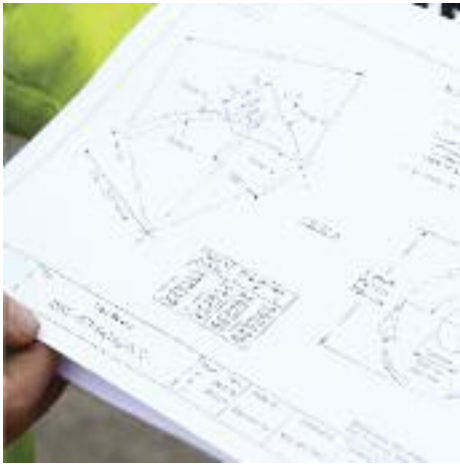
H2-GO
HYDROBLAST

HYDROBLAST REMOVAL

T: +44 (0) 1388 770 546 E: andrew@h2-go.com W: www.h2-go.com



- ROAD MARKING REMOVAL
- RUBBER REMOVAL
- ROAD RETEXTURING
- SURFACE CLEANING



A ONE STOP SHOP FOR THE ENTIRE HIGHWAY SECTOR'S TRAINING & DEVELOPMENT NEEDS

The National Highways Academy is the first truly nationwide provider of training and development solutions for highway specialists.

- Offering everything from operative apprenticeship and competency training through to quality management, environmental management solutions and university based senior management courses.
- Over 300 courses plus a bespoke facility, NHA truly is a one stop shop for the highway sector's development needs

Top Marks reviews the development of this RSMA initiative and the services NHA can provide to specialists throughout the highways sector and how it is literally 'Setting the Standard' for service and support to the sector.

When the Road Safety Markings Association established the National Highways Academy (NHA) in 2006, the initiative was designed to help accelerate the attainment of NVQ Level 2 qualifications for road marking operatives; through the establishment of a streamlined approach to qualification attainment based on industry focussed portfolios and a more dynamic approach to competency appraisals.

Fast forward five years and the NHA has had a significant impact in ensuring a fully qualified workforce in the road marking industry, however, its impact is now being felt much further afield as it completes its transformation into a provider of the full range of training and development services across the entire highways sector.

John Lloyd, Chairman of RSMA explains, "The Association had already operated both an NVQ Assessment Centre and an industry wide training brokerage for members when we decided to establish the NHA and it was only with the rolling out of a more progressive approach to the NVQ assessment process did we start to see the potential for a fuller range of industry wide training and development offers using the vast range of experience of the professionals working with and for the RSMA"

The realisation of this potential can now be seen in the range of training and development

services that the NHA now provides to companies across the highways sector, from road markers to surface dressers to ground stabilisation specialists, delivering qualifications from Level 2 NVQs and Skill Apprenticeships through to Environmental Management Certificates and University led Strategic Management courses.

For George Lee, National Director of RSMA and the driver behind the initial establishment of the National Highways Academy the organisation offers unique opportunities for businesses across the entire range of specialisms involved in the highways sector. "The beauty of NHA is that it is run by professionals with an intimate knowledge of the highways sector for businesses within that sector; providing a synergy of experience, knowledge and understanding of the sector. Rather than having just the limited knowledge of one particular facet of the sector, the trainers and staff working with and for NHA have a more holistic view, being both aware of and identifying trends across the sector, whether that be in new legislative requirements or best practice approaches impacting on one specialism that may benefit organisations in other specialisms or even expose them to risk. This approach means that NHA customers receive a depth of support and expertise that is often missing or simply unavailable from smaller providers delivering isolated services or delivering into a limited number of sectors"

However, NHA believes that it is not just this one stop shop approach bringing together a wide range of services but also its ethos that

marks it out as different to other providers in the highways sector – this is an ethos that sees NHA tailor its approach to meet each business' individual needs. NHA has a national track record of helping businesses change the way that they do things; focusing on building a working partnership with each individual business to deliver the solutions they require, whether that is better training solutions, improved health and safety or a redefined approach to their environmental impact.

A ONE STOP SHOP WITH BESPOKE AND OFF-THE-SHELF SOLUTIONS

The NHA 'one stop shop' approach brings together recognised and externally accredited courses alongside bespoke solutions for individual customers thereby providing a range of services that cannot be matched by any other provider in the highway sector. Whilst many clients look for standardised qualifications, sometimes the most effective way to meet your organisation's commercial and learning objectives is by commissioning a programme of training specifically for you that may merge individual business requirements with standardised qualifications. Detailed below are some of the areas where NHA can deliver for highways businesses whether with standardised courses or bespoke solutions for individual circumstances.

>> HEALTH & SAFETY

Excellent training is essential to getting health and safety at work right. That's why NHA deliver training tailored to suit everyone involved.

NHA Health and Safety service does far more than just 'tick the box'. Not only does it put

the essential information across and deliver the skills needed, it will also inspire people to put what they've learned into practice, and because NHA create the course around their customer's organisation practices and policies it can be put into practice immediately after the training has taken place.

>> ENVIRONMENT

In an age where integration of environmental legislation is pertinent in the running of any organisation, environmental management and awareness training is no longer the exclusive preserve of large companies.

Training and management of environmental impacts can be the key to the success of any business. NHA deliver environmental training and development for your staff, and can work with you to improve your organisations efficiency.

Environmental training can range from day-to-day awareness training up to the NHA Environmental Certificate and examination by the Institute of Environmental Management and Assessment.

>> QUALITY MANAGEMENT SYSTEMS

NHA offer a comprehensive portfolio of quality management solutions to help organisations in the understanding of processes and methods for process improvement, ideas and quality management

tools and techniques - all of which are central to organisational and change management and performance improvements for individuals, teams and organisations.

NHA provide the support, tools, materials and resource for practical application on new systems as well as ongoing performance measurement and management.

>> MATERIAL HANDLING

NHA courses are designed to refresh, convert or develop new skills to provide your business with improved performance in moving and/or handling goods in logistic operations; including fork lift operator training, crane operation and lift platform training, manual handling and training in the safety and security of hazardous goods and materials.

>> DRIVER TRAINING AND ROAD TRANSPORT

NHA deliver a wide range of driver training solutions from Driver Assessment through to LGV Training.

Delivered on site, at a time to suit customers' businesses, night or day, NHA courses are specific to customer needs, following customers' policies and practices, and are carried out by experienced and qualified trainers.

>> SKILLS TRAINING & APPRENTICESHIPS

NHA are involved in both the delivery and the development of skills training and occupational standards, ensuring that training for operatives in the front line of highway maintenance have the competencies and skills they need to safely deliver quality workmanship. Training to meet specific needs of formal qualifications along with bespoke modular training to address the needs of groups and individual operatives is at the core of NHA service provision.

>> EXTERNALLY ACCREDITED TO MAINTAIN QUALITY

NHA maintains a range of quality accreditations to ensure that the services they provide both set and maintain the standard that customers expect of a market leader.

>> FIND OUR MORE

For more information on what NHA can do for you and your business either contact NHA through www.nhasolutions.co.uk or by telephoning on 01427 610396







Why accept this?



When you can have a PREMARK Precision Marking!

Guaranteed for 4 Years!

**PREFORMED MARKINGS LTD, UNIT 6 OYSTER PARK,
109 CHERTSEY ROAD, BYFLEET, SURREY KT14 7AX**

TELEPHONE NUMBER: 01932 359270 • FAX NUMBER: 01932 340936
E-MAIL: info@preformedmarkings.co.uk • WEBSITE: www.preformedmarkings.co.uk



3M UNITED KINGDOM PLC

TRAFFIC SAFETY SYSTEMS, 3M CENTRE, CAIN ROAD
BRACKNELL, BERKSHIRE, RG12 8HT
TELEPHONE NUMBER: 01344 857950
FAX NUMBER: 01344 857970
WEBSITE: www.3m.co.uk/traffic



3M manufactures high quality road studs and marking tape. Utilising many years of experience in manufacturing retro-reflective products 3M™ Stamark™ Road marking Tapes and 3M™ Marker Series 290 Road Studs provide excellent durability and reflectivity to deliver safer, longer lasting road markings. Stamark comes as permanent or temporary tape which does not require the use of a primer, making application and removal fast, simple and safe. Please visit www.3m.co.uk/roadmarkings for more information.

All areas.

Manufacture of road studs and 3M™ Stamark™ Road Marking Tape.

A1 STREAMLINE ROAD MARKINGS LTD

UNIT 7, THOMPSON ROAD, WHITEHILLS BUSINESS PARK, BLACKPOOL,
LANCASHIRE, FY4 5LW
TELEPHONE NUMBER: 01253 791928
FAX NUMBER: 01253 760298

A1 Streamline Limited is a family run firm which has been established since 1990. The company achieved accreditation with BSI in 1997 and we have a reputation built on quality and reliability.

One of the key concerns in this industry is Health and Safety and it is to this effect that we employ an external Health and Safety consultant to ensure we meet all needs in this field.

At A1 Streamline Ltd our policy is that the customer comes first.

N W England, N E England, West Midlands, East Midlands, Yorkshire & Humberside, Wales & Scotland

The company covers many aspects of road marking work including: Work on roads, car parks and school playgrounds, using screed, extrusion, rib line, cats eye milling, pedestrian studs, also anti skid road surface dressing treatment.

AJL MARKING LTD

UNIT B4, MARLEY LANE BUSINESS PARK,
MARLEY LANE, BATTLE, EAST SUSSEX, TN33 0RE
TELEPHONE NUMBER: 01424 871100
FAX NUMBER: 0870 712 0625
E-MAIL: sam@ajlroadmarking.co.uk
WEBSITE: www.ajlroadmarking.co.uk



Formed in 1995 AJL Roadmarking have become a highly regarded company within the Road Marking Industry carrying out contracts for both major and minor contractors. The product range comprises road marking such as paint thermoplastic and tapes: specialist safety surfacing for traffic calming and demarcation purposes.

AJL Roadmarking's success is built on a strong reputation for reliability and service. South East England and London.

Road Markings, Playgrounds, Factory Floor Marking, Cycle Ways

ADBRUF LTD

GIBBS MARSH TRADING ESTATE, STALBRIDGE,
DORSET, DT10 2RX
TELEPHONE NUMBER: 01963 362640
FAX NUMBER: 01963 363762
E-MAIL: sales@adbruf.com
WEBSITE: www.adbruf.com



Adbruf Ltd. is a major manufacturer of high performance road safety and decorative materials.

The product range comprises road marking materials such as thermoplastics, paints, glass beads, cold plastics and tapes together with specialist surfacing materials for high friction, traffic calming and demarcation. Additional products include decorative surfacing systems, colour coated aggregates and ancillaries.

Adbruf is registered to BS EN ISO 9001:2008 and a licensee in the Kite Mark scheme to BS EN 1871:2000 for thermoplastic, paint and cold plastic products. Adbruf holds BBA HAPAS approvals for both hot and cold applied high friction surfacing systems. All UK Regions & International.

Manufacturers of road marking materials and specialist road safety surfacings.

ALLGLASS

49 BURNBRAE ROAD, LINWOOD INDUSTRIAL ESTATE,
LINWOOD, RENFREWSHIP, PA3 3BD
TELEPHONE NUMBER: 01505 325564
FAX NUMBER: 01505 325872
E-MAIL: info@allglass.org.uk
WEBSITE: allglass.org.uk



Allglass, part of the Geveko organisation is a new, yet very experienced Glass Bead manufacturer. Operating from a new factory it is already known for the high quality of its products, performance and service. Holding ISO9001, ISO14000, CE and Benor certification supplying beads from 20 microns to 5mm, offering specialist coatings and mixes with anti skid materials. Raw materials are selected, collected and controlled directly by Allglass, providing the purest of products.

All Areas

Manufacturers of glass bead and anti skid materials. Technical development.

ALLMARQUE PAVEMENT MARKING SYSTEMS

UNIT 4A, USKWAY INDUSTRIAL ESTATE, USK WAY
OLD TOWN DOCK, PORTLAND STREET, NEWPORT,
GWENT, NP20 2HZ
TELEPHONE NUMBER: 01633 282225
FAX NUMBER: 01633 250073
EMAIL: info@allmarquepms.co.uk
WEBSITE: www.allmarquepms.co.uk



Our highly successful company was formed in 2004 with a sole mission to deliver quality markings and service, through continuous business improvement and staff training, using only the RSMA for NVQ & CSCS qualifications.

We are ISO 9001:2008 accredited (SGS), CHAS accredited, and continually monitor our 100% customer feedback on all tasks carried out by our team of dedicated employees be it a 5 bay car park to a £30 million road scheme.

SW England, East Midlands, West Midlands, Wales, SE England & London.
Road and Surface Markings, Sports Arenas, Playgrounds, Studs, Hot & Cold Anti-Skid Products, Internal Warehouse Markings, MoD Bases, Imprinted Surfaces, Decorative Surfaces, Line Removal, Tarmac Repairs

AMBRIDGE THERMOPLASTICS LTD

BROOK FARM, DRAYTON ROAD, NEWTON LONGVILLE,
MILTON KEYNES, MK17 0BH
TELEPHONE NUMBER: +44 (0)1908 649 110
FAX NUMBER: +44 (0)1908 483 905
WEBSITE: www.ambridgethermoplastics.com



Ambridge Thermoplastics Ltd is a manufacturer of high quality road marking products. At Ambridge, we are able to give our clients the benefits of our years of expertise, experience and technological innovation, all supplied through our specially designed manufacturing plant. Service, quality and innovation are our ethos.

Through leading-edge technical design and processes we are able to combine sustainable resins with exceptional materials to produce the ideal marking for your project.

We offer a wide range of products, all of which are manufactured in accordance with ISO 9001 standards and are licensed to bear the BSI kite mark.

Products are tested to the latest European standards BSEN 1436 BSEN 1871. Ambridge Thermoplastics provide total satisfaction for our customers.

Ambridge Thermoplastics are part of the WJ Linkline group.

Road Marking Materials, Traffic Calming, High Friction Surfacing, Bituminous Products, Paint including MMA, Preformed Thermoplastics

AMEY

STREET SERVICES DIVISION, HATFIELD HOUSE, BURRINGTON WAY,
HONICKNOWLE, PLYMOUTH PL5 3LZ
TELEPHONE NUMBER: 01752 237969
FAX NUMBER: 01752 304680

ARIZONA CHEMICAL B. V.

TRANSISTORSTRAAT 16, 1322 C E ALMERE, THE NETHERLANDS
TEL NUMBER: (31) 36 546 2800
E-MAIL: roy.gerritsen@azchem.com



Arizona Chemicals, the world's largest producer of rosin derivative to the coatings, inks and adhesives market, is headquartered in Jacksonville, Fla U.S., and Almere, The Netherlands. Arizona Chemicals supplies these products globally from 14 manufacturing locations. In the coatings market, Arizona Chemicals produces rosin ester and maleic modified rosin ester for pavement marking applications. These products are used in thermoplastic binders to increase glass bead adhesion, oil and petrol resistance, and other performance properties. We ship products globally.

Production of products used in thermoplastic binders

AVON ROAD MARK LTD

UNIT 2 DEAN COURT, GREAT WESTERN BUSINESS PARK
YATE, BRISTOL, AVON BS37 5NJ
TELEPHONE NUMBER: 01454 322766
FAX NUMBER: 01454 318450
E-MAIL: post@avonroadmark.co.uk
WEB: www.avonroadmark.co.uk



Founded in 1975 we are accredited members of the RSMA, SAPCA, Safe Contractor and EXOR, assuring you of quality work whatever you require.

Our commitment to our clients is to provide free advice, design and practical solutions, backed up by unequalled service and delivery both within and outside standard working hours.

We generally operate within 150 miles radius of our Bristol however we will travel further for specific requirements.

Wales, East Midlands, West Midlands, South West England, South East England, London.

Road Markings, Sports Ground Marking, Factory Marking, Car Park Marking, Playground Marking, Cycle Ways, Tennis Court Marking, Airfield Marking, Anti-Skid Surface Dressing, Line Removal, Safety Markings, Non-Slip Colour Coating, Internal Warehouse Marking.

BELLSTAN LTD

HIGHFIELDS FARM, CLAPPERS FARM ROAD
SILCHESTER, READING, HANTS, RG7 2LH
TELEPHONE NUMBER: 01256 884107
FAX NUMBER: 01256 884188
E-MAIL: julian@bellstan.co.uk



Established 1969, this family run road marking business has grown to one of the largest independent road marking companies operating in the UK.

From its base in Reading, Berkshire, Bellstan provides road marking services, stud installation, coloured and antiskid surfacing to motorway, county and rural road networks. Quality, Service and Innovation is an integral part of Bellstan's continued successful growth. Specialists in Markings to Road Networks, Car Parks, Playgrounds, Airfields, Walk & Cycleways.

South East England, South West England, London and East Midlands.

Road Markings Condition Assessments & Surveys; Road Marking installation, renewal & removal; Thermoplastic, MMA & Chlorinated Rubber Markings; Hot & Cold applied coloured & high friction surfacing; Installation of Cats Eyes, Intelligent, Glass Armour, milled & stick on studs.

BOURNEMOUTH WHITE LINING LTD

THE DELL, VALLEY ROAD, THROOP, BOURNEMOUTH, DORSET, BH8 0EB
TELEPHONE NUMBER: 01202 548102
FAX NUMBER: 01202 548102
South England

BPF ROAD SAFETY LTD

86 ANNACLOY ROAD, DOWNPATRICK, CO. DOWN BT30 9AJ
TELEPHONE NUMBER: 028 448 31831
FAX NUMBER: 028 448 31673
EMAIL: info@bpfroadsafety.co.uk
WEBSITE: www.bpfroadsafety.co.uk

BPF Road Safety Ltd is a family company established in 1975 to apply road and carpark markings across Northern Ireland to the highest standards. We are accredited to ISO 9001 Quality, and OHSAS 18001 Health and Safety Systems. We are members of Constructionline and the Road Safety Markings Association. We are certified to apply Roadmarkings in compliance with Highway Sector Scheme 7. More details on our scope of works can be found on our website: www.bpfroadsafety.co.uk.

Northern Ireland.

We specialise in: Road Marking; Car park Marking, both new and recovering; Factory health & safety markings; Pedestrian walkways and cycle paths; coloured surfacing; school and play yard markings; temporary road markings; spray road markings; line removal and surface preparation; installation and removal of Roadstuds.

BRIDGEPOINT ROADMARKINGS

92 CLONALLON ROAD, WARRENPOINT, COUNTY DOWN, BT34 3QQ

TELEPHONE NUMBER: 028 417 72705
FAX NUMBER: 028 417 53023
E-MAIL: bridgepoint@btconnect.com

Established in 1985 the company operates throughout Ireland. Registered to ISO 9001:2000, OHSAS 18001 and Highways Sector Scheme 7. The company prides itself on its reputation to carry out high quality work. All manner of work undertaken ranging from car parks to motorway work.

Road Markings, Car Park Marking, Factory Marking, Playgrounds, Airport Marking, Road Studs, Anti Skid Surfacing, Line Removal, Inductive Loop Cutting, Traffic Counters



CAMLINE CAMBRIDGE LTD

CAUSEWAY FARM, HILLROW CAUSEWAY, HADDENHAM, ELY, CAMBRIDGESHIRE, CB6 3PA

TELEPHONE NUMBER: 01353 740610
FAX NUMBER: 01353 749133
MOBILE: 07860 457379

Established over 20 years. Work undertaken for schools, hospitals, airports, councils, civil engineers, factories and private individuals. Small and large jobs all done by experienced men. Work done in thermoplastic and paint.

Road Markings, Car Parks, Sports Courts, Factories etc.

CENTRAL LINEMARKINGS LTD

HEAD OFFICE, HIGHWAY HOUSE, HOLLYBUSH LANE, ALDERSHOT, HANTS, GU11 2PX

TELEPHONE NUMBER: 01252 333385
FAX NUMBER: 01252 333389
EMAIL: enquiries@centrallinemarkings.co.uk
WEBSITE: www.centrallinemarkings.com

Central Linemarkings is a company specialising in the application of thermoplastic road markings and paint markings. We have the capabilities of screed and spray-applied thermoplastic, rib line, anti skid surfacing and Halifax reflecting road studs.

We are a BSI registered company and are CHAS, Construction Line and Safe Contractor certified. We currently work all over the South of England and are willing to provide a free quote for any work in these areas.

Please contact us on 01252 333385 for more information. South West England, South East England, London, East Midlands, West Midlands, Wales. **Road Markings, Airfield Markings, Sports Ground Markings, Car Park Markings, High Friction Surfacing, Cycle Ways, Halifax Road Studs.**

CL ROADMARKINGS LIMITED

178 HEMPSTEAD ROAD, KENT, ME7 3QG

TEL NO: 01634 230541 or 07961 368082
FAX NO: 01634 230541
WEBSITE: www.clroadmarkings.co.uk
E-MAIL: enquiries@clroadmarkings.co.uk

C L Roadmarkings was formed in 1998 and has continued to build its reputation on providing a very high standard of work, excellent reliability and service for both the private and public sector.

Roadmarkings, Car park, Schools

CLEARVIEW TRAFFIC GROUP

A4 TELFORD ROAD, BICESTER, OX26 4LD

TELEPHONE NO: 01869 362809
FAX NO: 01869 246858
EMAIL: info@clearviewtraffic.com
WEBSITE: www.clearviewtraffic.com

Clearview Traffic provides traffic safety, monitoring and data products and services worldwide. Group companies include Astucia, providers of SolarLite road studs which using ultra bright LEDs can reduce night time accidents by over 70%. They can also be used in Street Light Switch Off campaigns and for cycle path delineation. The group also includes Golden River who provide traffic data management systems and Count On Us for transport data collection and analysis. We are ISO9001 (quality), 14001 (environmental), 18001 (safety) and hold full National Highways Agency Sector Scheme 7, 8, 12b, 12d accreditations.

Clearview Traffic have offices covering the whole of the UK & Ireland. **Clearview Traffic Supplies & Installs Astucia Road Studs across the UK and advises and trains distributors in over 50 countries across the world. We have recently completed a 4000 stud install on the M25 in Surrey and 22000 studs on the A2 and A20, towards the port of Dover in Kent. In addition, Clearview Traffic manufactures and installs Traffic Monitoring Equipment to all major highway authorities and councils across the country**



CLEARWAY (MIDLANDS) LTD

UNIT 1, 602 THE WELLS ROAD, NOTTINGHAM NG3 3AA

TELEPHONE NUMBER: 0115 962 6583
FAX NUMBER: 0115 969 3155
EMAIL: sales@clearwayroadmarking.com
WEBSITE: www.clearwayroadmarking.com

Established in 1984, Clearway offers a high quality, reliable and competitive service with quick response times. Our established customer base includes: Local Authorities, Construction Companies, Civil Engineers, Health Authorities, Schools, Airports, Logistics and Distribution Companies, Government Offices, Public Houses and Hotels, Motorway Service Areas and Utilities Companies.

Road Markings; Car Park Marking; Safety Markings; Playgrounds/Sports Courts; Line Removal.



COLAS LTD

WALLAGE LANE, ROWFANT, CRAWLEY, WEST SUSSEX RH10 4NF

TEL NO: 01342 711100
FAX NO: 01342 711199
EMAIL: Marcus.mullaney@colas.co.uk

COUPE LINE

HACKWORTH INDUSTRIAL PARK, SHILDON, CO. DURHAM, DL4 1HG

TELEPHONE NUMBER: 01388 774040
FAX NUMBER: 01388 776010
E-MAIL: info@coupline.com
WEBSITE: www.coupline.com

Coupe Line has extensive experience in providing quality road marking services throughout the British road network and now incorporates hydroblast road marking removal and retexturing.

Coupe Line operates nationwide offering clients' road marking, anti-skid surfacing, road stud installation, hydroblast removal and traffic management.

Nationwide coverage for road marking, anti-skid surfacing, road stud installation and hydroblast services.

Scotland, NE England, East Midlands, SE England, Wales, NW England, West Midlands, London, Northern Ireland, Yorkshire and Humberside, SW England.

Road Marking, anti-skid surfacing, road studs, hydroblast removal and traffic management.



DeANGELO BROTHERS UK LTD T/A DBi PRISMO CONTRACTING SERVICES

RENNY'S LANE, DRAGONVILLE INDUSTRIAL ESTATE

BELMONT, DURHAM, DH1 2RS
TEL NO: 0845 688 0155
FAX NO: 0191 370 6440
E-MAIL: contracting@dbiservices.com
WEBSITE: www.dbiservices.com



Previously part of Ennis Prismo Traffic Safety Solutions, DBi Prismo Contracting Services is now part of DeAngelo Brothers Incorporated – a world leader in transportation infrastructure maintenance solutions. DBi Prismo is able to offer services that are unrivalled in the road safety industry. With over 30 years experience DBi Prismo is uniquely qualified to meet your road safety requirements across the UK. Nationwide

Our areas of expertise include; Road Markings – Thermoplastic, Paint, Cold Plastic, Temporary Road Markings, Road Studs, Road Repair, Crack Sealing Solutions, Surface Safety Solutions, High Friction Surfacing Coloured and Decorative Surfacing, Imprint, Bridge Deck & Joint Repair Road Marking Assessment, Traffic Sign Management, Removal of Road Markings – Hydroblasting, Gritblasting, Scabbles

DRYDEN LINE MARKINGS

THE MEADOWS, MARSH LANE, HEALING,

NORTH EAST LINCOLNSHIRE, DN41 7RZ
TELEPHONE NUMBER: 01472 882770
MOBILE NUMBER: 07712 772110
E Mail: drydenlinemarkings@hotmail.co.uk

North East England, North West England, Yorkshire and Humberside, East Midlands. **Road Marking, Sports Ground Marking, Car Park Marking, Cycle Ways.**

EASTERN ROADMARKINGS LTD

8 ST HELENA ROAD, COLCHESTER, ESSEX CO3 3BA

TEL NO: 01206 514640
FAX NO: 01206 625425
MOB NO: 07920 156486
E-MAIL: info@easternroadmarkings.com

Eastern Roadmarkings Ltd is a family run business based in East Anglia. We are a highly regarded company in the area and carry out contracts for major and minor contractors, local authorities and private companies. We have a reputation for expertise, quality and reliability. We are registered to ISO 9001 and NHSS7. Our aim is to make our Company the preferred contractor in our area.

Roadmarking, Airfields, Factories, Sport Centres, Car Parks, Cycle ways etc



ELASTOMERICS LTD

SUMMIT HOUSE, 48A BRAMHALL LANE SOUTH

BRAMHALL, STOCKPORT, SK7 1AH

Elastomerics is a UK distributor supplying Hydrocarbon Resins, Polymers, Pigments and Additives to the Road Marking, Adhesives Sealants & Polymer Compounding Markets. We represent several large Principals namely ExxonMobil, BASF, Tosoh, Viwax and Songwon. Elastomerics can also offer formulation and technical advice in relation to the above mentioned markets.

For further information call Anthony Lowe on 0161 439 9116 or email to Anthony@elastomerics.com

We are a distributor of Hydrocarbon Resin, Waxes, EVA and SIS Polymers.



ENNIS PRISMO

Ennis Prismo Traffic Safety Solutions is one of the leading manufacturers of road markings and surfacing, traffic safety products and road studs in the world.

We have a highly skilled and experienced team who can assist in advising clients on achieving the results they require whilst offering true value. From our base in Chorley, we are able to supply customers throughout the UK.

Ennis Prismo is part of Ennis Traffic Safety Solutions, the world's largest producer of horizontal road safety markings.

With over 75 years experience, you can be sure that our knowledge of road safety is unrivalled and we are fully committed to offering our customers the highest level of service.

ENNIS PRISMO TRAFFIC SAFETY SOLUTIONS

DRUMHEAD ROAD, CHORLEY NORTH BUSINESS PARK, CHORLEY LANCASHIRE PR6 7BX

TELEPHONE NUMBER: +44 (0) 1257 225 100
FAX NUMBER: +44 (0) 1257 224 605
EMAIL: info@ennisprismo.com
WEBSITE: www.ennisprismo.com

NE England, East Midlands, SE England, North Wales, NW England, West Midlands, London, Northern Ireland, Yorks & Humberside, SW England **Manufacturing.**

ENTERPRISE (AOL) LTD

LANCASTER HOUSE, CENTURION WAY, LEYLAND,
LANCASHIRE, PR26 6TX
TELEPHONE NUMBER: 01772 819000
FAX NUMBER: 01772 819001
Web: www.enterprise.plc.uk



EUROMARK GB LTD

EUROMARK HOUSE, ASTORIA COURT
TOM DANDO CLOSE, NORMANTON
INDUSTRIAL ESTATE, NORMANTON, WF6 1TP
TELEPHONE NUMBER: 01924 227250
FAX NUMBER: 01924 227251
E-MAIL: EuromarkGB@ringway.co.uk



Euromark GB Ltd is a national contractor and manufacturer specialising in road markings, coloured surface markings, anti-skid/high-friction surfaces, road studs and airfield marking. We have developed five main operating regions in order to give a high level of service to our customers.

Our current market sectors are Highways Agency, County Council, Borough Council, TFL, Traffic Scotland, Local Authorities, Main Civil Engineering Contractors and Facilities Management contractors.

Scotland, Wales, North East England, North West England, Yorkshire and Humberside, East Midlands, South West England, South East England, London, West Midlands, Northern Ireland, Isle of Wight, Southern England.

Road Marking, Airfield Marking, Car Park Marking, Playground Marking, Sports Courts Marking, Cycle Way Marking & High Friction Surfacing.

EUROMARKINGS LTD

6, GILLMORE ROAD, MILTON, WESTON-SUPER-MARE, SOMERSET BS22 8T
TEL NO: 01934 518933
FAX NO: 01934 518933
EMAIL: euromarkings@ymail.com

EVONIK ROHM GmbH

RODENBACHER CHAUSSEE 4, HANAU-WOLFGANG, 63457
TEL NO: 01480 812105
MOB NO: 07989 458034
EMAIL: david.rouse@evonik.com



F M CONWAY LTD

CONWAY HOUSE, ROCHESTER WAY, DARTFORD, KENT, DA1 3QY
TELEPHONE NUMBER: 0208 636 8822
FAX NUMBER: 0208 636 8827

G & B ROADMARKINGS

UNIT 1, FLOWER HILL INDUSTRIAL ESTATE, FLOWER HILL STREET, AIRDRIE, ML6 6AP
TELEPHONE NUMBER: 01236 764867
FAX NUMBER: 01236 767336

G & B Roadmarkings was established in 1982 and achieved BS5750/ISO 9002 in 1993. We carry out major and minor roadmarking, airfield marking, studding, and coloured surfacing contracts throughout Scotland and the Islands.

Road Marking, Airfield Marking, Car Park Marking, High Friction Surfacing, Cycle Ways & Road Studs

GILVAR LINING LTD

OLD STATION YARD, WALTON LANE,
BARTON UNDER NEEDWOOD,
BURTON ON TRENT, DE13 8EJ
TELEPHONE NUMBER: 01283 712450
FAX NUMBER: 01283 716525



Gilvar Lining Ltd was established in September 1980 to provide quality surface markings for roads, car parks, school playgrounds, sports courts and factory floors in thermoplastic material and floor paint. The company has grown over the years and now operates 7 crews over an area approximately 100 miles radius from Burton upon Trent.

Wales, NE England, NW England, Yorkshire and Humberside, E Midlands, SW England, SE England, London.

Road Marking, Sports Ground Marking, Car Park Marking, Playground Marking, Cycle Ways.

GLAMORGAN WHITE LINING

SEAWALL ROAD, TREMORFA, CARDIFF, CF24 5TH
TELEPHONE NUMBER: 029 2048 7888
FAX NUMBER: 029 2048 8456
E-MAIL: info@glamorganwhitelining.co.uk



Glamorgan White Lining is the premier road marking companies based in South Wales. Registered to ISO 9001:2000 with SGS Yarsley. Glamorgan White Lining is a quality company providing a cost effective service to Local Authorities, contractors, and private companies.

Our aim is to make our company name synonymous with our customer's needs.

Wales, West Midlands, South West England.

Screed, spray, extrusion, ribline, road marking, painted markings to playgrounds, factories, special surfaces, and industrial premises. Hot applied anti skid/coloured surfacing, cold applied PU and epoxy surfacing. All types of cats eyes. Bridge deck expansion joints.

GORDON GRAHAM ROADMARKINGS LTD

THE GARAGE, GILSLAND, BRAMPTON,
CUMBRIA, CA8 7BT
TELEPHONE NUMBER: 01697 747501 and 747234
FAX NUMBER: 01697 747690
E-MAIL: enquiries@ggrrm.co.uk



Gordon Graham Roadmarkings Ltd. is based in Gilsland Cumbria, and as the name implies is a Roadmarking and Roadstud installation specialist company. Established in 1984, we are BSI approved to BS EN ISO 9001 2000 and are members of the RSMA.

We have a fleet of specially adapted vehicles and also ancillary vehicles to offer a variety of roadmarking application techniques and road stud installation. We also have the capability to remove all types of surface lines using skidsteer removal machines and water-jet removal systems.

Scotland, North East England, North West England.

Road Safety Markings, Road Studs, Anti-Skid Application, Removal of Road Markings.

H & G ASH ROAD MARKINGS LTD

JAMAGE INDUSTRIAL ESTATE, TALKIE PITS, STOKE ON TRENT,
STAFFS, ST7 1XW
TELEPHONE NUMBER: 01782 775590
FAX NUMBER: 01782 775594
EMAIL: sales@hgash.co.uk
WEBSITE: www.hgash.co.uk



Formed in 1981 H & G Ash is a family business specialising in all types of surface marking. A quality service is provided for jobs ranging from school playgrounds to large road schemes.

Shropshire, Midlands, Cheshire, North Wales, NW England

Road, Car Park, Factory, Sport & Playground Markings, High Friction Surface Treatment

HENRY KEMP (ROAD MAINTENANCE) LTD

CENTURY HOUSE, CENTURY ROAD, RETFORD, NOTTS, DN22 7TD
TELEPHONE NUMBER: 01777 703643
FAX NUMBER: 01777 860589
EMAIL: phil.wright@henrykemp.co.uk



As the UK's leading independent road stud specialist, Kemps have been at the cutting edge of road stud installation technology for over forty years. Our plant and vehicles are the most up to date in the industry and are maintained to the highest standards of reliability. Having provided quality service to the best contractors on many prestigious contracts, the Kemp team is well positioned to maintain that excellent level of service.

All Mainland UK

Supply and installation of road studs, road marking, car park marking

HI WAY SERVICES LTD

UNIT 32, THOMAS WAY,
3a LAKEVIEW INTERNATIONAL BUSINESS PARK,
HERSDEN, CANTERBURY, KENT, CT3 4JZ
TELEPHONE NUMBER: 01227 714380
FAX NUMBER: 01227 713067
E - MAIL: admin@hi-way.co.uk
WEBSITE: www.hi-way.co.uk



With nearly 30 years experience, Hi-way Services Ltd is one of the largest road marking contractors in the UK.

We provide nationwide cover; no job is too big or too small. All of our work is competitively priced and fully guaranteed. We undertake to provide a full and free site survey within 48 hours of enquiry.

In October 2008 we launched our online store, providing a wide range of road marking and related products at competitive prices. Visit www.hi-way-store.co.uk for further information.

We operate a wide range of specialist equipment, including 2 multi-marks (one self feed), three cats eye milling machines and a grit blaster, together with the two anti-skid trucks and ten screed lorries. All equipment is available for hire, together with our experienced operators, including feeder truck with qualified driver.

We also offer emergency machine cover for other contractors' breakdown, with as little as 10 hours notice.

Our registered office is in Kent and we also have depots in Eastbourne, Essex & Littlehampton.

Scotland, Wales, Northern Ireland, North East England, North West England, Yorkshire & Humberside, East Midlands, West Midlands, South West England, South East England, London.

Rib-Line, Extrusion, Spray, Screed, Cats Eyes & Solar Studs, Line Removal, Anti Skid (hot & cold), Equipment Hire, Supply of Products On-Line

HIGHLINE ROADMARKINGS LTD

GREENACRES, BURNHAM ROAD, LATCHINGDON
ESSEX CM3 6HA

TEL NO: 01621 741777
FAX NO: 01621 741333
MOB NO: 07970 637314
EMAIL: highlineroadmarkings@hotmail.com



Highline Roadmarkings Ltd was established in 1998 Specialising in the application of Screed Thermoplastic and Cold Applied Paint Markings, the company is approved to ISO 9000-2008 standard and has also achieved Safe Contractor accreditation and are ConstructionLine registered. All employees are CSCS/NVQ qualified.

SE England, East Midlands, London

Highline specialises in Highways, Car Parks, Air Fields, Sports Courts, playgrounds, Line Removal, and stick on Road Studs. We work for various large contractors and local authorities.

HITEX TRAFFIC SAFETY LTD

CLOISTER WAY, ELLESMERE PORT, CHESHIRE
CH65 4EL

TELEPHONE NUMBER: 0151 355 4100
FAX NUMBER: 0151 355 4171
E-MAIL: info@hitex.uk.com
WEBSITE: www.hitex.uk.com



Hitex - Quality Right Down The Line.

Hitex Traffic Safety Ltd supply roadmarkings and specialist surfacing materials to worldwide markets from our manufacturing complex in Cheshire.

Our comprehensive product range encompasses quality and innovation at every level.

We manufacture a full range of roadmarkings including extruded, screed, spray and profiled grades, BBA/HAPAS approved Type 1 high friction surfacing, and specialist treatments such as Texprint imprintable thermoplastic and BBA/HAPAS approved TexBand, our highway joint and crack repair system.

Nationwide

Manufacturers

JHB (UK) LTD

UNIT 23, TEIGNBRIDGE BUSINESS CENTRE, CAVALIER ROAD, HEATHFIELD
INDUSTRIAL ESTATE, NEWTON ABBOT, DEVON TQ12 6TZ

TEL NO: 01626 830014
FAX NO: 01626 830015
EMAIL: james@jhbukltd.co.uk

JOINTLINE LTD.

AIRFIELD VIEW, CAMP RD, WITHAM ST. HUGHS,
LINCOLN, LN6 9TW

TELEPHONE NUMBER 01522 868636
FAX NUMBER 01522 868806

The Jointline Group of companies is based at Witham St Hughs, Lincoln with regional depots located in West Yorkshire and London. Jointline Ltd was formed in 1987 following many years experience in the airfield and highway field. The Group has

evolved from the core company in to a cluster of commercial companies consisting of specialist units which undertake various aspects of commercial and military airport work plus highway maintenance operations throughout the UK and worldwide. Scotland, Wales, Northern Ireland, North East England, North West England, Yorkshire and Humberside. East Midlands, South West England, South East England, London. **Road Marking, Airfield Marking, Sports Ground Marking, Car Park Marking, High Friction Surfacing, Cycle Ways, Crack Repairs, Joint Sealing, Open/Captive Blasting.**

K J LINES LTD

382 ECCLESHALL ROAD, STAFFORD, ST16 1JW
TELEPHONE NUMBER: 01785 254444
FAX NUMBER: 01785 254830
EMAIL: KJLINES382@aol.com
WEBSITE: www.KJLINES.co.uk



Road marking specialists. Thermoplastic markings for Roads, Car Parks, Sports Areas, Pubs and Local Authorities.

Midlands, Shropshire, Cheshire, NW England & Wales

Road Marking & Road Studs, Sports Ground Marking, Car Park Marking, Playground Marking, Cycle Ways.

KELLY BROS (ROAD MARKINGS) LTD

15 STATION ROAD, YATE, BRISTOL BS37 5HT
TELEPHONE NUMBER: 01454 312675
FAX NUMBER: 01454 320425



Kelly Bros have been manufacturing Thermoplastic Road Marking materials for over 30 years. With this experience and knowledge together with our research and development strategy going forward, we have developed materials to achieve striking performance for high reflectivity and other performance criteria in relation to the BSEN 1436 standard (performance for road users).

Our Kelly Bros (Erin) Ltd branded products include Extrusion, Screed, Spray and Rib Systems. We also manufacture high durability Anti Skid systems for Traffic calming or other purposes in a wide variety of colours.

Manufacture and Application of Thermoplastic Road Marking Materials and Anti Skid Surfacing Systems.

L & R ROADLINES LTD

24 - 34 FORTH STREET, LIVERPOOL L20 8JW

TEL NUMBER: 0151 933 6293
FAX NUMBER: 0151 922 3115
E-MAIL: info@lroadlines.co.uk
WEBSITE: www.lroadlines.co.uk



FAULKNER DRIVE, MIDDLEWICH, CHESHIRE CW10 0JN

TEL NUMBER: 01606 833393
FAX NUMBER: 01606 837472
E-MAIL: info@lroadlines.co.uk
WEBSITE: www.lroadlines.co.uk

L & R Roadlines was established in 1973 and is founded on a simple premise; to combine the best products available with the highest standard of service.

Based in the north west of England we carry out work locally and nationally. We are BSI and BBA accredited and active members of CHAS, Constructionline and SAFEcontractor. We offer a wide range of accredited products, ranging from thermoplastic and chlorinated rubber markings to road studs, anti-skid and traffic calming surfacing, TexBand (joint and crack repair) and TexPrint (decorative surfacing) and the hydroblaster to remove road markings or fuel spillages.

Contracts include motorway maintenance schemes, local authority contracts, traffic calming schemes and homezones.

At L & R Roadlines it is our priority to provide our clients with the benefits of the latest technological advances in the road surfacing industry.

Nationwide

Thermoplastic Road Markings; High Friction Surfacing; Joint & Crack Repair System; Decorative Surfacing; Road studs; Hydroblast Removal; Ecodyn Surveying.

LIGHT DOME ROAD PRODUCTS

4 FIELDER DRIVE, NEWGATE LANE INDUSTRIAL ESTATE, FAREHAM, HAMPSHIRE, PO14 1JE
TELEPHONE NUMBER: 01329 284780
FAX NUMBER: 01329 829485
EMAIL: sales@lightdome.co.uk
WEBSITE: www.lightdome.co.uk



Light Dome Road Products manufacture and distribute depressible road studs. In addition to the traditional cast iron base we also offer a recyclable lightweight version which is manufactured from recycled plastic. Other products in our range include stainless steel and aluminium pelstuds as well as wildlife warning reflectors.

The parent company Industrial Rubber plc offers a full manufacturing and design service in rubber and has a wide Customer base offering speciality mouldings in all industries.

Manufacture and Distributor of Road Studs and Manufacturer of Depressible Road Studs.

LINE MARKINGS LTD

ROAD CARE HOUSE, NEW WORKS ROAD, LOW MOOR BRADFORD BD12 0RU

TELEPHONE NUMBER: 01274 606770
FAX NUMBER: 01274 602802
EMAIL: chrisainsworth@roadcare-group.com



Line Markings Ltd

LINE MARKINGS SCOTTISH OFFICE

UNIT 1 VIKING WORKS, BROWNSBURN INDUSTRIAL ESTATE, AIRDRIE ML6 9SE
TELEPHONE NUMBER: 01236 755114
FAX NUMBER: 01236 751880

LINE MARKINGS MIDLANDS OFFICE

UNIT 38, PHOENIX INTERNATIONAL INDUSTRIAL ESTATE, CHARLES STREET WEST BROMWICH B70 0AY
TELEPHONE NUMBER: 0121 520 1820
FAX NUMBER: 0121 520 1824

Line Markings Ltd are a wholly owned subsidiary of AB Geveko, Europe's largest specialist road marking company.

We offer nationwide contracting services to term maintenance contractors, local authorities and the private sector. Services offered include thermoplastic markings, high friction surfacing, road studding, Dot'n'Line high performance wet night high visibility line, MMA high performance road marking and specialist jointing services. The company is Quality Assured to ISO9001:2008 and Highways Sector Scheme 7 and BBA/HAPAS approved.

Scotland, Wales, NE England, NW England, Yorkshire and Humberside, E Midlands, SW England, SE England, London.

Road Marking; Road Studding; Car Parks; High Friction Surfacing; Cycle Paths; Bus Lanes; Factory Markings; Playground Markings, Jointing and Over Banding; Coloured Decorative and Printed Surfacing.

LINEAR ROADMARKING LTD

THE BUILDINGS, HABERTOFT FARM, HABERTOFT, ALFORD, Lincs, LN13 9NU

TELEPHONE NUMBER: 01507 463777
FAX NUMBER: 01507 463999
EMAIL: linearl@btconnect.com

Linear Roadmarkings Ltd were successfully established in 2002 and since have grown as a well known company within Lincolnshire and surrounding counties (as listed below.) Linear currently operate both hand-lay and machine work and would be happy to quote for any of the work as stated below.

NE England, NW England, East Midlands, West Midlands, Yorks & Humberside & Wales.

Roadmarking, Airfields, Factory, Sports Ground, Car Park - Thermo Screed, Spray, Extrusion, Ribline, Removal of Old Markings, Paint and Preformed Markings.

L M S HIGHWAYS LTD

UNIT 4, INTERNATIONAL HOUSE, BATTLE ROAD, HEATHFIELD, NEWTON ABBOT, DEVON TQ12 6RY

TELEPHONE NUMBER: 01626 331771
FAX NUMBER: 0871 661 6727
E-MAIL: info@linemarkingservices.co.uk
WEB SITE: www.linemarkingservices.co.uk



Successfully established for over 25 years and covering the South West of England, Line Marking Services provides quality assured solutions to a diverse range of road and line marking challenges working in both the public and private sectors. The company in addition carries out signing and supplementary surfacing – joint sealing, anti-skid, factory safety markings, sports halls, preformed and playground markings. The company is quality assured to ISO 9001:2000 and uses Highway Sector Scheme 7.

Road Markings, Sports Ground Marking, Factory Marking, Car Park Marking, Playground Marking, Anti-skid / Coloured Surfacing, Cycle Ways, Jointing / Overbanding and Line Removal.

LINKLINE MAINTENANCE SERVICES

BROOK FARM, DRAYTON ROAD, NEWTON LONGVILLE, MILTON KEYNES, MK17 0BH

TELEPHONE NUMBER: 01908 649110
FAX NUMBER: 01908 483905
EMAIL: info@linklinegroup.com
WEBSITE: www.linklinegroup.com



Linkline Maintenance Services provide an all round nationwide lining and safety surfacing resource. We follow a simple ethos, Service, Quality and Innovation which has served our clientele and supply chain well and will continue to do so. When considering markings for road, rail, air, education, parking, leisure, logos we will bring our expertise and ethos to your project.....call Linkline.

Linkline is part of the WJ Linkline Group that also includes Ambridge Thermoplastics and WJ Roadmarkings.

M & D ROADMARKINGS LTD

5 LINFOLD CLOSE, BRAINTREE, ESSEX, CM7 9FB

TELEPHONE NUMBER: 01376 327420
FAX NUMBER: 01376 327421

M & D Road Markings Ltd is registered to BSEN 9002. We offer the full range of contracting services covering the application of thermoplastic road markings of all types. We pride ourselves on our high standard of work.

South East England.

Road Markings, Airfields, Sports Pitches, Playgrounds, Car Parks, Cycle Ways, Line Removal, Road Studs.

M Mc G ROADMARKS LTD

16 MOOR HILL ROAD, NEWRY, CO. DOWN, N. IRELAND BT34 2QJ

TELEPHONE NUMBER: 028 302 6702
FAX NUMBER: 028 302 60819

MARKON LTD

19, DUNNSWOOD ROAD, WADPARK INDUSTRIAL ESTATE, CUMBERNAULD G67 3EN

TELEPHONE NUMBER: 01236 875134
FAX NUMBER: 01236 875525
WEBSITE: www.markon.co.uk



Markon Limited is a wholly owned subsidiary of the Leith's Group who provide Quarry Products, Concrete Products, Construction, Surfacing, Road Markings, Road Planning, Plant and Transport services throughout Scotland. With over 25 years experience we can respond quickly and effectively to any challenge. Our approach is integrated, multidisciplinary and above all client responsive.

Road Marking, Road Studs, Airfield Marking, Sports Ground Marking, Car Park Marking, Factory Marking, High Friction Surfacing, Coloured Surfacing, Imprint Surfacing, Decorative Surfacing, Road Planing and Road Marking Removal

MARLBOROUGH SURFACING LTD

HARE ROW, BETHNAL GREEN, LONDON E2 9BY

TEL NO: 020 7739 2976
EMAIL: ababbs@marlboroughsurfacing.co.uk

MINELCO LTD

FLIXBOROUGH INDUSTRIAL ESTATE, FLIXBOROUGH, NORTH LINCOLNSHIRE DN15 8SF

TELEPHONE NUMBER: 01724 277411
FAX NUMBER: 01724 866405
WEB: www.minelco.com
E Mail: minelco.ltd@minelco.com



minerals customised for industry

Minelco is an international industrial minerals company, sourcing and processing a wide range of minerals for various industries. We process white mineral fillers for use in road markings and a range of minerals for use in anti-skid road surfacing.

Raw material Supplier

NEWPORT INDUSTRIES LTD

MERLIN HOUSE, BELMONT TERRACE, CHISWICK, LONDON W4 5UG

TEL: 020 8742 0333
FAX: 020 8742 0444
EMAIL: andrew@newport-industries.com



Newport Industries Ltd – a niche distributor of chemicals to a wide range of industries. The group distributes approx 200,000 MT of Inorganic and Organics Chemicals

globally, with warehouses in several countries, and strategic sourcing offices in Turkey, Ukraine, China and India. ISO9001 certified and CBA members; speed, quality and consistency is their formula for success.

The Newport Technical Centre in Shanghai is in place to control the product quality and the Supply Chain teams in London and Shanghai work together to ensure smooth and reliable deliveries to our clients around Europe.

Nationwide

Supplies Resin and Calcined Bauxite to Manufacturers and Applicators of Road Markings and High Friction Surfacing

NOLAN ROAD MARKING LTD

2 CAE BROMBIL, MARGAM, PORT TALBOT, SA13 2AJ
TELEPHONE NUMBER: 01639 887862
FAX NUMBER: 01639 898140

We as a company offer a full range of contracting services covering the application of road markings and anti skid surfacing of all types. Our aims are to provide a high quality and cost effective service to all our clients, who range from Local Authorities through to schools, contractors and private companies, etc. We are ISO 9001:2008 registered and HAPAS BBA approved. All of our employees have an NVQ Level 2 in roadmarking and hold CSCS cards. We have also recently obtained Sector Scheme 7 approval.

Wales, South East England, South West England, London, East Midlands, West Midlands.
Road Markings, Airfield Markings, Sports Ground Markings, Anti Skid Surfacing, Cycle Ways, Line Removal & Cats Eyes

NORTHERN ROAD MARKINGS LTD

89 DRUMAGARNER ROAD, KILREA, Co. DERRY BT51 5TE
TELEPHONE NUMBER: 028 2954 0906
FAX NUMBER: 028 2954 1140
EMAIL: nrm@kestrelplastics.com



Based in Kilrea, Co. Derry, Northern Road Markings was formed in 1984. With a fully qualified workforce, we specialise in all types of Road Markings, Overbanding & Joint-Sealing, Installation of Traffic Loop Sensors for Vehicle Weigh in Motion Systems and cats eyes installation and removal. A commitment to delivering the highest standards of workmanship and customer service has seen the company form long-lasting relationships with a range of clients in both private and public sectors.

Road Marking, Airfield Markings, Sports ground Markings, Playground Markings, Car Park Markings, Cats eye Installation & Removal.

NOTTINGHAMSHIRE COUNTY COUNCIL

HIGHWAY DEPOT, STEPHENSON WAY, NEWARK, NOTTINGHAMSHIRE NG24 2EG
TELEPHONE NUMBER: 01636 652352

NCC operates an in-house road marking operation fully accredited to EN: 9002. We deliver a high quality service offering a wide range of applications, including carriageway lining and hot applied high friction surfacing.

Road markings, Anti Skid Surfacing.

PAINTLINE (SOUTHERN) LTD

SHERATON, 52 OXENDEN ROAD, TONGHAM, FARNHAM, SURREY, GU10 1AJ
TELEPHONE NUMBER: 01252 312933
FAX NUMBER: 01252 344008

POTTERS BALLOTINI LTD

UK HEAD OFFICE, PONTEFRAC ROAD, BARNLEY
SOUTH YORKSHIRE S71 1HJ
TELEPHONE NUMBER: 01226 704500
FAX NUMBER: 01226 207615
E-MAIL ENQUIRIES: potters-uk@pottersgroup.com
WEBSITE: www.pottersgroup.com



Potters is the world's leading supplier of reflective Glass Beads used in Road Markings. The company manufactures a range of beads, including STARLITEBEAD® high-performance beads with enhanced properties to provide retro-reflectivity in wet night conditions. Innovations consist of a range of Glass Bead Coatings (including AC02, AC07, and AC90) to improve bead performance on the marking, as well as Anti-Skid media to provide the safest Glass Bead blend. Customers benefit from our state of the art TEC Centre with AWT, and on-site technical support.

The company operates in accordance with BS EN 9001:2008 and BS EN 14001:2004 in all European Sites.

All areas.

Manufacturers of Glass Beads and Road Marking technical support.

PREFORMED MARKINGS LTD

UNIT 6 OYSTER PARK, 109 CHERTSEY ROAD
BYFLEET, SURREY KT14 7AX

TELEPHONE NUMBER: 01932 359270
FAX NUMBER: 01932 340936
E-MAIL: info@preformedmarkings.co.uk
WEBSITE: www.preformedmarkings.co.uk



Main agents for PREMARK® preformed thermoplastics in the UK and Ireland. Manufacturers of preformed thermoplastic markings. Over 6000 items produced for roads and playgrounds. Fully reflective and non toxic. All to BSEN 1436. Company logos and advertisement images in 14 colours. Also a range of Premark® TacPads® in red, buff and grey.

All areas of the UK & Ireland including the Channel Islands.
Sales of all Preformed Road and Playground Markings

QUALITY MARKING SERVICES LTD

CANNON ROAD, HEATHFIELD INDUSTRIAL ESTATE,
NEWTON ABBOT, TQ12 6SG
TELEPHONE NUMBER: 01626 836777
FAX NUMBER: 01626 836774
E-MAIL: info@qmarkings.co.uk
Website: www.qmarkings.co.uk



Quality Marking Services Limited is a professional and innovative Highway Line Marking and Specialist Surfacing Contractor operating throughout the South and South West of England.

The company is an Investor in People Company and is accredited to BS EN ISO9001:2008 incorporating Sector Scheme No.7 for Road Markings as well as being a BBA approved installer for Type 1 High Friction Surfacing.

We are committed to quality workmanship and continuous improvement through a dedicated, professional workforce that is registered, trained and assessed to industry NVQ and CSCS qualifications.

QMS business activities include the revolutionary high-speed line marking system for the maintenance system that provides high retro-reflectivity performance throughout its functional life in an environmentally friendly way.

South and South West England.

Highway Markings, Car Park Markings, Playground Markings, Sports Court Markings & Non-Slip Coloured Coatings, Resin Bonded / Bound Gravel Decorative Surface Treatment, Type 1 High Friction Surfacing, Internal Warehouse Markings and Non-Slip Coloured Coatings, Preformed Thermoplastic.

RAKEM LTD

WELLINGTON STREET, BURY, LANCASHIRE BL8 2BD
TEL NO: 0161 762 0044
FAX NO: 0161 762 0033
WEBSITE: www.rakem.co.uk
EMAIL: kevin@rakem.co.uk



Rakem Ltd, founded in 1996, is an agent & distributor to manufacturers of speciality raw material to the paper, coating, plastic, textile fibres, pharmaceutical and chemical industries. We are unique in that we supply a complete range of white pigments and fillers. Our approach is to work with our customers to provide solutions that are unimpeded by product range limitations.

We have a full technical sales team who can ascertain your requirements and then tailor products to suit. We cover the UK and Ireland and have distribution sites throughout the country.

Nationwide

Agent & Distributor of: Titanium Dioxide; Pigment Yellow; Calcium Carbonate; Micronized Waxes; Bulk Liquids; Hydrous Clays; Sachtleben Environmental Products; Silica.

RIGGOTT & CO LTD

UNIT X, LODGE LANE INDUSTRIAL ESTATE,
TUXFORD, NEWARK, NOTTS, NG22 0NL
TELEPHONE NUMBER: 01777 872525
FAX NUMBER: 01777 872626
E MAIL: info@riggott.co.uk



Riggotts - We are a market leader in line marking and surface coating. Working with a host of blue chip companies and local authorities.

Centrally located in the UK we respond quickly and efficiently to our customers needs. We have invested in the latest technology and equipment to get the job done right every time.

We are fully insured and hold ROSPA Gold Award, CSCS Gold Award, Investors in People, ISO 9002 etc.

All areas.

General Line Marking, Internal Line Marking, Specialist Cleaning, Car Park & Grounds Maintenance, Anti Skid Surfacing, Road Stud Installation, Floor Graphics, Specialist Surface Coatings, Airfield Markings

R. S. CLARE & CO LTD

8-14 STANHOPE ST, LIVERPOOL, L8 5RQ
TELEPHONE NUMBER: 0151 7092902
FAX NUMBER: 0151 7090518
E-MAIL: sales@rsclare.co.uk
WEBSITE: www.rsclare.com



R. S. Clare design and develop thermoplastic road marking and coloured surfacing products to the highest level of European or customer specific requirements, within our ISO9001 and 14001 accreditation.

Our philosophy is to ensure we can meet all our existing and new customer requirements, delivering a consistent, high quality product within the short lead times demanded by the industry.

The group also has a contracting capability. Please refer to Wilson & Scott for further information.

NW England, NE England, Yorkshire and Humberside, W Midlands, E Midlands, S W England, SE England, London, Scotland, Wales and Northern Ireland.

Thermoplastic Road Marking and Coloured Surfacing manufacturer, Road Marking, Airfield Marking, Sports Ground Marking, Factory Marking, Car Park Marking, Playground Marking, High Friction Surfacing, Coloured Surfacing.

ROAD MARKING SERVICES LTD

CHESTERFIELD RD, SWALLOWNEST, SHEFFIELD, S26 4TL
TELEPHONE NUMBER: 0114 2548111
FAX NUMBER: 0114 2548333
WEBSITE: www.roadmarkingservices.co.uk



Road Marking Services specialises in the laying of thermoplastic and painted markings for roads, car parks, tennis and sports courts, playgrounds and factories. We also install road studs including surface mounted and non-reflective. Cold and hot applied anti-skid surfaces are also laid, available in a wide range of colours. RMS is Quality Assured to ISO 9001, and is committed to quality products and service. North East England, North West England, Yorkshire and Humberside, East Midlands, West Midlands & London.

Road Marking, Sports Ground Marking, Factory Marking, Car Park Marking, Playground Marking, High Friction Surfacing, Cycle Ways, Tennis Court Colouring.

ROAD SAFETY CONTRACTS LTD

102 GLEN ROAD, MAGHERA, CO.LONDONDERRY BT46 5JG
TELEPHONE NUMBER: 028 7964 3038
FAX NUMBER: 028 7964 4569
E MAIL: info@roadsafetycontracts.com



Road Safety Contracts Ltd is a progressive company operating in many areas of waste management, environmental maintenance and road marking throughout Ireland. The company was established in 1983 and is based in Maghera with strategic locations throughout Ireland.

We offer a reliable competitive service to both public and private sector clients.

Throughout Ireland

Road Marking & Road Stud Installation & Anti-Skid, Gully Emptying & Jetting, Weed Control, Grass Cutting, De-Sludging of Septic Tanks, Sludge Tankering, De-Gritting & Cleaning of Deep Sumps.

ROADCRAFT SAFETY PRODUCTS

UNIT 1, KNIGHTCOTT INDUSTRIAL ESTATE,
BANWELL, WESTON SUPER MARE, BS29 6JN
TELEPHONE NUMBER: 01934 825850
FAX NUMBER: 01934 823106
E MAIL: sales@roadcraft.com



Roadcraft offer over 30 years of combined industry experience in the development of roadstud technology and in particular supply systems which offer customers and contractors all the benefits of best value with the same high levels of service. Roadcraft will advise on all aspects of National and European standards. Our main focus remains on continuing innovation and service to match the needs of roadstuds to our present day network.

Guide to companies in The Road Marking Industry

SW England, SE England, East Midlands, West Midlands, NW England, Yorks & Humberside, London, Wales.

Supply only. Roadstuds and Roadmarking Pre Formed Material.

ROADGRIP LTD

ROSSWAY FARM, ROSSWAY PARK, BERKHAMSTEAD, HERTS HP4 3TZ
TEL NO: 01442 863914
FAX NO: 01442 875305
EMAIL: hugh@roadgrip.co.uk

ROADMARK LTD

MINSTERWORTH, GLOUCESTERSHIRE GL2 8JX
TELEPHONE NUMBER: 01452 750795
FAX NUMBER: 01452 750796
EMAIL: sales@roadmark.co.uk

For the application of all types of lining in thermoplastic, water based paint and antiskid works, road stud installation, both steel and glass types, contact the people who care.

We also manufacture and supply thermoplastic for road marking and antiskid materials, to lead free formulations if required.

Please contact us for your requirements. Export enquiries welcome.
National

Road Marking; Airport Marking; Sports Ground Marking; Factory Marking; Car Park Marking; Cycle Ways; Road Studs; Anti Skid & Line Removal.

ROMMCO UK LTD

ROADCARE HOUSE, NEW WORKS ROAD,
LOW MOOR, BRADFORD, BD12 0RU
TELEPHONE NUMBER: 01274 606770
FAX NUMBER: 01274 602802
E-MAIL: info@rommco-uk-ltd.com
WEBSITE: www.rommco-uk-ltd.com



Rommco UK Ltd is a successful thermoplastic manufacturer maintaining BSI Kitemark licence KM21170 and is Quality assured to ISO 9001:2000.

Rommco UK's ongoing commitment to product development and investment in training maintains its position as a leading player within the European road marking industry. The NITEBRITE range of high performance profile, extrusion, screed and spray road marking materials all exceed European requirements.

Rommco also produces its own range of multicoloured anti-skid surface treatment called ARRET.

All areas.

Manufacture of thermoplastic road marking materials plus high friction surfacing materials.

SAS - LINING SERVICES LTD

9 QUEENSBURY WAY, SWANLAND
E YORKSHIRE HU14 3QE
TELEPHONE NUMBER: 01482 633860
MOBILE NUMBER: 07721 408099
EMAIL: steve.grayson@sas-lining.co.uk



SAS Lining Services is a company specialising in the application of thermoplastic road markings and anti-skid surfacing and are BBA Type 1 approved. We have been trading for 7 years and have built a good reputation of quality and reliability, meeting all requirements for private and local authorities work. We are ISO9001 & National Highway Sector Scheme 7 & CHAS accredited as well as ConstructionLine approved working 24/7.

NE England, NW England, Yorkshire and Humberside, East Midlands, West Midlands, & London

Anti-Skid & Thermoplastic Road Markings for Local Authorities, Car Parks, Industrial Estates, Highways.

SHANNON ROAD MARKINGS LTD

4 GARNOCK, BROOKE DRIVE, BELFAST, BT11 9NP
TELEPHONE NUMBER: 02890 629937
FAX NUMBER: 02890 629233



A well established family firm with a reputation for high quality work in the public and private sectors, Shannon Roadmarkings undertakes road markings and laying of cats eyes across Ireland. Our experienced and professional staff can provide advice on design, layout and roadmarking standards for any job. Contact us today.

Safety Cert. ISO 9001:2000

Northern Ireland

Road Marking, Anti Skid Surfacing, Airfield Markings, Sports Ground Marking, Car Park Marking, Play Ground Marking, Cycle Ways, Cats Eyes.

SHILDON THERMOPLASTICS LTD

HACKWORTH IND PARK, SHILDON, CO DURHAM DL4 1HG
TELEPHONE NUMBER: 01388 776070
FAX NUMBER: 01388 776010
E-MAIL: info@shildonthermoplastics.co.uk
WEBSITE: www.shildonthermoplastics.co.uk



Shildon Thermoplastics supplies an extensive range of high performance thermoplastic road markings, high friction and coloured surfacing materials, and bituminous products.

Our mission is to provide quality goods traffic calming measures to enhance road safety for all users, and we are committed to continuous improvement and investment to satisfy our customers' requirements.

The company is quality assured to BS EN ISO 9001 : 2008 and our Thermogrip high friction surfacing range is accredited to the BBA HAPAS.

Scotland, Wales, Northern Ireland, North East England, North West England, Yorkshire and Humberside, East Midlands, South West England, South East England, London.

Manufacturers of thermoplastic road markings, high friction and coloured surfacing, and bituminous products.

SOMERFORD EQUIPMENT LTD

MOSS LANE INDUSTRIAL ESTATE, ELWORTH, SANDBACH,
CHESHIRE CW11 3WZ
TEL: 01270 750450
FAX: 01270 750410
WEBSITE: www.somerfordequipment.co.uk



Somerford Equipment is the leading manufacturers of roadmarking and associated vehicles and equipment. From full application vehicles, lining trailers, and stud drilling equipment with debris suction systems, to preheaters, HCA lances, prams, and handtools, we not only manufacture to full range at our custom built Sandbach depot, but also offer repairs, maintenance, servicing and training back-up, as well as a vast stock of spare parts held on site.

Quality. Durability. Reliability. In everything we do.

Nationwide

Manufacture of standard and bespoke/custom design roadmarking and associated vehicles, equipment & accessories; repair, maintenance; refurbishment and servicing to same; supply of spare parts and ancillary equipment; operator training.

SOVITEC BELGIUM S.A.

AV. du MARQUIS 4, 6220 FLEURUS, BELGIUM
TELEPHONE NUMBER: +32 (0) 7182 2777
FAX NUMBER: +32 (0) 7181 7673
E-MAIL: info@sovitec.com
WEBSITE: www.sovitec.com

SISTER COMPANIES: Sovitec France S.A.S; Sovitec Iberica S.A;
Sovitec Glaspasian GmbH; Glassbeads S.A

For more than 60 years Sovitec has been producing glass microbeads in modern factories equipped with sophisticated production and quality-control facilities. Sovitec ensures the continuity of its innovations thanks to its R & D Centre. Its new range for road marking - Echostar™ - guarantees an excellent performance in all weather conditions. Echostar™, certified in 12 countries from North to South Europe and applied in 67 countries in the world, is almost 1 500 000 km of road markings beginning 2011.

Glass Microbeads Supplier; Road Marking Wear Simulations; Technical Assistance on Road; Tests and Samples in our Laboratory

SPRINGWOOD ENGINEERING

BURGHFIELD COMMON, READING, RG7 3DH
TELEPHONE NUMBER: 0118 983 2411
FAX NUMBER: 0118 983 4731
E-MAIL: springwood.eng@btopenworld.com
WEBSITE: www.springwoodengineering.co.uk



Established since 1958 now part of Tex Engineering Ltd (plc) the company is leading manufacturer of truck mounted and self propelled machines for the application of screed, spray, extrusion and profile methods of thermoplastic road marking.

For assistance please contact Andy Lloyd.

World Wide

Manufacturers of Thermoplastic White Lining Machines: Truck, Trailers & Self Propelled. Together with a full range of Accessories.

STIRLING LLOYD POLYCHEM LTD.

UNION BANK, KING STREET, KNUTSFORD
CHESHIRE WA16 6EF
TEL NO: 01565 633111
FAX NO: 01565 633555
E-MAIL: marketing@stirlinglloyd.com
WEBSITE: www.stirlinglloyd.com



Established in 1970, Stirling Lloyd is the developer and manufacturer of the "Safetrack®" range of high performance MMA based cold line marking and aesthetic resin surfacing systems. The Safetrack range provides products that are extremely durable and provide simple, safe and cost effective solutions to to-days Highways Maintenance issues. Our line marking products have been designed to exceed the performance requirements of BS EN1436 and ensure their high performance is maintained over the long term.

All Areas

Development and manufacture of Road Markings, Off-highway Line Markings, Car Park Marking, Skid Resistant Surfacing, Decorative Resin Surfacing, High Friction Surfacing and Crack Sealing Products.

STRET福德 INDUSTRIAL SERVICES LTD

RADNOR STREET, STRET福德, MANCHESTER M32 8LE
TEL NUMBER: 0161 865 4235
FAX NUMBER: 0161 865 0139
MOBILE NUMBER: 07899 905388 24 HRS
E-MAIL: sales@sisgroup.co.uk
WEBSITE: www.sisgroup.co.uk



Stretford Industrial Services Limited is a professional and innovative road marking company covering all types of road marking works, and also specializes in high friction surface systems. We offer the complete service from design to completion and are fully committed to quality, training and continuous improvement.

We have developed in the North West a main operating region in order to give a high level of service to our customers.

Our current market types are Councils, Main Civil Engineering and Management Contractors.

NW England, Wales and Yorks & Humberside.

Road Marking, Car Park Markings, Playground Marking, Cycle Ways, Factory Marking, High Friction Surfacing, Sports Ground Marking, and All Types of Road Signs

CUSTOMISED SIGNS

EMAIL: sales@customisedsigns.co.uk
WEBSITE: www.customisedsigns.co.uk



Stretford Industrial Services Ltd trading as Customised Signs is a professional and innovative signs manufacturer covering all types of road signs, and safety signs, most of which can be ordered direct from our new online store. We offer the complete service from design to completion and are fully committed to quality at all times.

We have developed in the North West a main operating region in order to give a high level of service to our customers.

Our current market types are Councils, Schools, Main Civil Engineering and management Contractors.

England, Wales, Scotland, Ireland & Europe

Mandatory Signs; General Signs; Traffic Signs; Site Entrance Signs; Hazard Signs; Fire Exit Signs; Zintec Signs; Road Signs; Customised Signs to Order.

STRET福德 INDUSTRIAL SERVICES LTD

RUMPLERSTRASSE 12, 45659 RECKINGHAUSEN, GERMANY
TEL NO: +49 2361 6094 0
FAX NO: +49 2361 3216 7
E-MAIL: vestglas@swarco.com
WEBSITE: www.swarco.com

SWARCO VESTGLAS GMBH UK AGENT: HITEX TRAFFIC SAFETY LTD

CLOISTER WAY, ELLESMERE PORT, CHESHIRE CH65 4EL
TEL NO: 0151 355 4100
FAX NO: 0151 355 4171
E-MAIL: john.lloyd@hitex-plastic.co.uk
WEBSITE: www.hitex.uk.com

Swarco Vestglas is your point of reference for all types of quality reflective micro glass beads for enhanced road safety. The range includes SWARCOLUX and the special

MEGALUX-BEADS® available in various gradations and custom designed coatings. These beads are your first choice for higher performance road markings in particular for improved wet night visibility. Swarco Vestglas serves clients all over Europe and with its state-of-the-art production facilities and ISO 9001 certified quality management, Swarco Vestglas is well prepared for the challenges of European market in the 3rd millennium. Swarco Vestglas also supply pre-formed thermoplastic road markings through group company IMS International Marking Services GmbH
Manufacturer and Nationwide supplier of Glass Beads and Preformed Thermoplastic road and playground markings.

TANGENT ROADMARKING LTD

6 THE RUFFETTS, SOUTH CROYDON, SURREY CR2 7LQ
MOBILE NO: 07779 238550

THAMES LONDON LTD

THAMES LODGE, GEORGE SUMMERS CLOSE,
MIDWAY CITY TRADING ESTATE, ROCHESTER, KENT ME2 4NQ
TEL: 0844 243 6555
FAX: 0844 243 6777
WEBSITE: www.thameslondon.co.uk
EMAIL: steve.alexandrou@thameslondon.co.uk



Thames is committed to continual improvement, we do not settle for anything less than a fully committed service which offers the highest standards by qualified staff and operatives. We cover the countries networks, and have depots throughout the South East. We are a multi-disciplined company, and can offer a complete service, and always work with our clients to ensure a best advised product and service to our stake holder's benefit. Nationwide

All methods of Line Painting, Thermoplastic, Cold Paint, Preform, MMA. Stud Application both Reflective & Non-Reflective, Hydro-Blast Removal, Civils & Utilities, & Signs.

TIM DOODY & CO LTD

DOODY'S YARD, PARK ROAD, HALTWHISTLE, NORTHUMBERLAND, NE49 9LD
TELEPHONE NUMBER: 01434 320660 (MARKING)
TELEPHONE NUMBER: 01434 322359 (SIGNS)
FAX NUMBER: 01434 322104
E-MAIL: pdoody@btinternet.com

Established in 1979 Tim Doody Road Markings Ltd offers a full range of road marking applications including spray, screed, extrusion, Textureflex, Road Studs and removal of markings. The company is based in Northumberland and carries out work throughout the U.K and Republic of Ireland.

Surface markings to Roads, Car Parks, Airfields, etc. Anti-skid treatment and snow plough resistant 101 type road studs, Hire & Supply of Mobile Solar Powered signs for use in all Traffic Management/ Corporate Events etc.

TREK HIGHWAY SERVICES

HALL LANE, GREENS ROAD, DEREHAM, NORFOLK NR20 3TG
TEL NO: 01362 853604
EMAIL: kane.halsey@TREKgroup.co.uk



UK LINING LTD

UNITS 1 & 2 GREENWAY BUSINESS PARK, WINSLOW ROAD, GREAT HORWOOD,
MILTON KEYNES, MK17 0NY
TELEPHONE NUMBER: 01296 711666
FAX NUMBER: 01296 711671
E MAIL: info@uklining.co.uk

As a company we have demonstrated over the last 7 years, that we can deliver a quality product with regards to Thermoplastic/ Painted Roadmarkings, Road Studs and Coloured / Skid Resistant Surfaces. We offer very competitive prices combined with reliability and professionalism.

The company has attained accreditation to the latest standard of ISO 9001:2000 incorporating Sector Scheme No 7 for roadmarkings.

East Midlands, West Midlands, SW England, SE England and London

Road Markings, Airfield Markings, Sports Ground Markings, Factory Markings, Car Park Markings, Line Removal, Coloured Surfacing, High Friction Surfacing, Cycle Ways, Road Studs.

VOLKER HIGHWAYS



HERTFORD ROAD, HODDESDON,
HERTFORDSHIRE, EN11 7BU
TELEPHONE NUMBER: 01992 305 000
FAX NUMBER: 01992 305 001
E MAIL: jim.newton@volkerhighways.co.uk
WEBSITE: www.volkerhighways.co.uk

Volker Highways an established highways, paving and civil engineering contractor that serves diverse clients in London and the Home Counties. Based in the south east, Crowley maintains a fleet of road marking, traffic management and specialist surfacing equipment. Volker Highways also offers a broad range of services ranging from asphalt patching to complete pedestrian precincts and operates a CITB, City & Guilds, LANTRA and British Safety Council accredited training school.

Road marking, Anti-skid and Specialist surfacing, Highways and Pavement construction and maintenance, Minor civil engineering new works and repairs/maintenance, Hard and Soft landscaping including Heritage Restoration and Conservation works, Traffic Management.

W J ROADMARKINGS (SOUTH WEST) LLP

ASH HOUSE, COOK WAY, BINDON ROAD, TAUNTON TA2 6BJ
TEL NO: 01823 289 950
FAX NO: 01823 331 859
EMAIL: info.sw@wjroadmarkings.com

We were established in April 2010 as part of the WJ Linkline Group and have our offices in Taunton, perfectly situated to serve the whole of the South West of England. We operate the newest fleet of vehicles with Euro 5 engines and the Group's high quality thermoplastics to apply Roadmarkings, in addition to antiskid surfacing and the installation of roadstuds to management frameworks, construction sites, resurfacing schemes, carparks & school playgrounds. Innovation, Service & Quality is the focus of this new business as a dominant player in the WJ Linkline Group.

**S W England
Application of Roadmarkings & Antiskid Surfacing; Installation of Roadstuds**

W J ROADMARKINGS LTD

7 BROCK WAY, KNUITON, NEWCASTLE UNDER LYME,
STAFFORDSHIRE, ST5 6AZ
TELEPHONE NUMBER: +44 (0)1782 381 780
FAX NUMBER: +44 (0)1782 613 543
UNIT 2, AINLEY INDUSTRIAL ESTATE, AINLEY BOTTOM, ELLAND
WEST YORKSHIRE HX5 9JP
TELEPHONE NUMBER: +44 (0)1422 370 659
FAX NUMBER: +44 (0)1422 376 825
WEBSITES: www.wjroadmarkings.com www.wj-hydroblast.com



W J Roadmarkings Ltd is the largest independent road marking contractor within the UK, and as part of the WJ LinklineGroup we are supported by our own manufacturer of high quality road marking products Ambridge Thermoplastics Ltd.

Established in 1987 we specialise in the application of temporary road markings, permanent road markings, road studs, high friction surfacing, manufacture of vehicles and are the industry leader in the removal of road markings and high friction surfacing using Hydroblast technology.

Based in 4 strategically placed depots throughout the UK we can offer a local and national service that is unrivalled by our competitors.

The Company's success is attributable to its firm commitment

to Service, Quality and Innovation for its customers.

WALKER HIGHWAYS

ROSS YARD, ROSS WAY,
SHORNCLEIFFE INDUSTRIAL ESTATE, FOLKESTONE,
KENT, CT20 3UQ
TELEPHONE NUMBER: 01303 258277
FAX NUMBER: 01303 227256
E-MAIL: info@walker-highways.co.uk



Road marking in Paint and Thermoplastic Screed to all surfaces. Supply and installation of road signs and bollards.

Traffic Management installations to Chapter 8, 12A/12B/12D Accredited Manufacture and hire of temporary road signs, Health & safety site information boards, All PPE requirements, vehicle signage, shop frontage signs plus much more from our in house "Sign Shop". Sector Scheme 7 accredited.

South East England & London

Traffic Management 12A/12B/12D, Roadmarking, Manufacture of Signs, Vehicle Signage, PPE etc.

WEST COASTAL WHITE LINE CO LTD

STATION ROAD, BRITON FERRY, NEATH, SA11 2SU
TELEPHONE NUMBER: 01639 823923
FAX NUMBER: 01639 823903

Suppliers and Installers of :

Hot applied thermoplastic to B53262 to roads, airfields and car parks.

Paint to B56044 to roads, airfields, car parks, factories, warehouses, playgrounds and sports courts.

Various types of cats eyes, stick on studs, signs, hot and cold anti skid surfacing to clause 924.

We are BSI Registered to BS EN ISO 9001:2000.

Wales, South East England, South West England, London and Midlands.

Road Marking, Airfield Markings, Sports Ground Marking, Car Park Marking, High Friction Surfacing, Cycle Ways.

WHITEMOUNTAIN QUARRIES LTD

11 SHEEPWALK ROAD, LISBURN, BT28 3RD
TELEPHONE NUMBER: 02892 501000
FAX NUMBER: 02892 501100
WEBSITE: www.whitemountain.co.uk



Whitemountain Quarries Ltd., part of the Lagan Group of companies, is a leading road marking, road surfacing and highway maintenance contractor in Northern Ireland. Our road marking operations includes main contract works for both public and private sector clients, complementing our core activities as well as specialist and decorative surfacing applications.

We lay thermoplastic road markings and road studs in accordance with National Highway Sector Scheme 7.

Accredited to ISO 9001:2008, ISO 14001:2004 and OHSAS 18001:2007.

Northern Ireland.

Road Marking, Car Park Markings, Airport Markings, Factory Markings, Installation of Road Studs, Decorative Surfacing.

WILSON AND SCOTT (HIGHWAYS) LTD

COLNDALE ROAD, POYLE INDUSTRIAL ESTATE, COLNBROOK
SLOUGH SL3 0HQ
TELEPHONE NUMBER: 01753 671600
FAX NUMBER: 01753 671611
WEBSITE: www.wilsonandscott.co.uk
E-MAIL: sales@wilsonandscott.co.uk



Established in 1952 and a founder member of the RSMA.

Approved contractors for the application of NiteSite high performance markings.

Accredited to:

ISO 9002 and HA Sector Scheme No.7, as well as:

Constructionline; CHAS; Causeway; BBA/HAPAS

Also members of:

Confederation of Construction Specialists; BRAKE; British Safety Council; Highway

Industry Confederation

Our highly trained workforce and modern fleet of vehicles and machinery are based at depots throughout the UK.

Scotland, Wales, NW England, East Midlands, West Midlands, SE England, London.

Thermoplastic screed, spray, extrusion and rib, Traffic Paint, Methylmethacrylate(MMA) materials, Road Studs, Road Signs, Coloured and Anti-skid surfacing, Slurry Surfacing

INTERESTED IN JOINING RSMA?

Membership of RSMA is open to road marking contractors, manufacturers and raw material suppliers. Potential members must hold a recognised Quality Assurance qualification and have a demonstrated track record in the industry.

Subscription details are available from:

RSMA, Unit 35, Corringham Road Industrial Estate, Gainsborough DN21 1QB

Telephone: 01427 610101
or by emailing: info@rsma.co.uk



Global Leaders in Traffic Safety



Road Markings



High Friction Surfacing



**High Performance
Road Markings**



**Decorative &
Coloured Surfacing**



**Bridge Jointing
& Crack Repair**



**Stimsonite® Road
Studs**



Technical Testing



Temporary Markings

Ennis Prismo
TRAFFIC SAFETY SOLUTIONS

Ennis Prismo Traffic Safety Solutions is the global market leading manufacturer of road markings, surfacings and traffic safety products.

Formerly known as Prismo Road Markings Limited, the company is now part of Ennis Traffic Safety Solutions - the world leader in road safety products.

Our multinational sales, logistics and manufacturing operations, combined with our extensive product range and over 100 years experience, mean that Ennis Prismo Traffic Safety Solutions is uniquely placed to meet your road safety requirements.

Visit our website to see installation videos, download product brochures and learn more about how we can help you.



**Surface Safety
Solutions**



Traffic Products

**ENNIS
Prismo**
TRAFFIC SAFETY SOLUTIONS

Tel: +44 (0) 1257 225 100
E-mail: info@ennisprismo.com
www.ennisprismo.com



www.ennisprismo.com